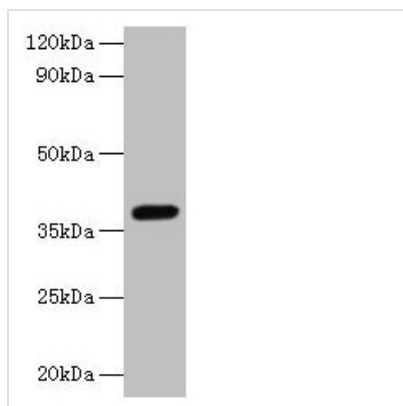




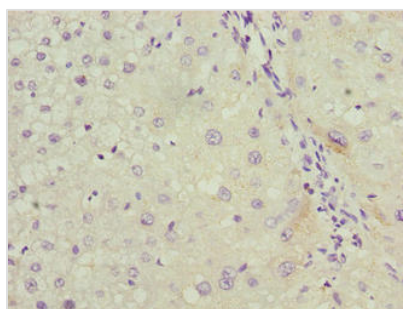
LRG1 Antibody

Product Code	CSB-PA11059A0Rb
Storage	Upon receipt, store at -20°C or -80°C. Avoid repeated freeze.
Uniprot No.	P02750
Immunogen	Recombinant Human Leucine-rich alpha-2-glycoprotein protein (36-346AA)
Raised In	Rabbit
Species Reactivity	Human, Mouse
Tested Applications	ELISA, WB, IHC; Recommended dilution: WB:1:1000-1:5000, IHC:1:20-1:200
Form	Liquid
Conjugate	Non-conjugated
Storage Buffer	Preservative: 0.03% Proclin 300 Constituents: 50% Glycerol, 0.01M PBS, PH 7.4
Purification Method	>95%, Protein G purified
Isotype	IgG
Clonality	Polyclonal
Alias	Leucine-rich alpha-2-glycoprotein (LRG), LRG1, LRG
Immunogen Species	Homo sapiens (Human)
Research Area	Immunology
Target Names	LRG1

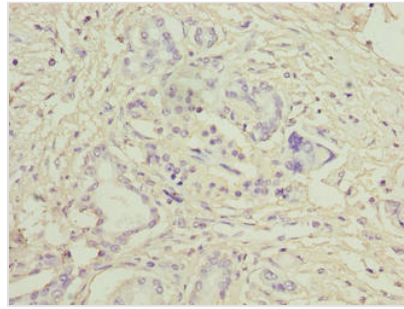
Image



Western blot
All lanes: LRG1 antibody at 2µg/ml + Mouse liver tissue
Secondary
Goat polyclonal to rabbit IgG at 1/10000 dilution
Predicted band size: 39 kDa
Observed band size: 39 kDa



Immunohistochemistry of paraffin-embedded human liver cancer using CSB-PA11059A0Rb at dilution of 1:100



Immunohistochemistry of paraffin-embedded human pancreatic cancer using CSB-PA11059A0Rb at dilution of 1:100

Usage

For Research Use Only. Not for use in diagnostic or therapeutic procedures.