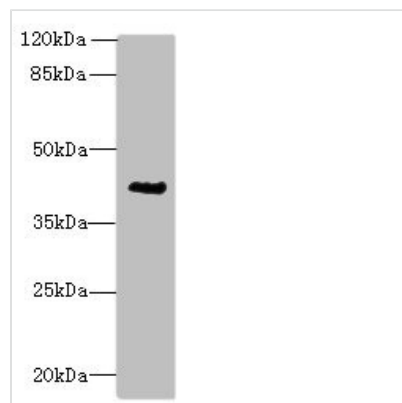




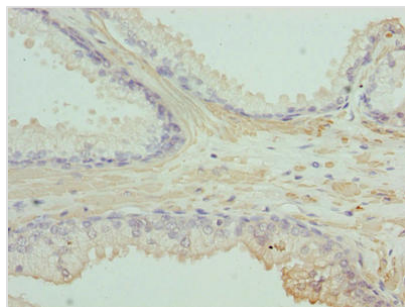
# ACTG2 Antibody

<b>Product Code</b>	CSB-PA12799A0Rb
<b>Storage</b>	Upon receipt, store at -20°C or -80°C. Avoid repeated freeze.
<b>Uniprot No.</b>	P63267
<b>Immunogen</b>	Recombinant Human Actin, gamma-enteric smooth muscle protein (181-376AA)
<b>Raised In</b>	Rabbit
<b>Species Reactivity</b>	Human
<b>Tested Applications</b>	ELISA, WB, IHC; Recommended dilution: WB:1:1000-1:5000, IHC:1:20-1:200
<b>Form</b>	Liquid
<b>Conjugate</b>	Non-conjugated
<b>Storage Buffer</b>	Preservative: 0.03% Proclin 300 Constituents: 50% Glycerol, 0.01M PBS, PH 7.4
<b>Purification Method</b>	>95%, Protein G purified
<b>Isotype</b>	IgG
<b>Clonality</b>	Polyclonal
<b>Alias</b>	Actin, gamma-enteric smooth muscle (Alpha-actin-3) (Gamma-2-actin) (Smooth muscle gamma-actin) [Cleaved into: Actin, gamma-enteric smooth muscle, intermediate form], ACTG2, ACTA3 ACTL3 ACTSG
<b>Immunogen Species</b>	Homo sapiens (Human)
<b>Research Area</b>	Signal Transduction
<b>Target Names</b>	ACTG2

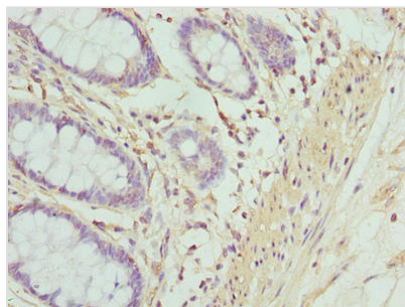
## Image



Western blot  
 All lanes: ACTG2 antibody at 3µg/ml + CEM whole cell lysate  
 Secondary  
 Goat polyclonal to rabbit IgG at 1/10000 dilution  
 Predicted band size: 42, 38 kDa  
 Observed band size: 42 kDa



Immunohistochemistry of paraffin-embedded human prostate cancer using CSB-PA12799A0Rb at dilution of 1:100



Immunohistochemistry of paraffin-embedded human colon tissue using CSB-PA12799A0Rb at dilution of 1:100

## Usage

For Research Use Only. Not for use in diagnostic or therapeutic procedures.