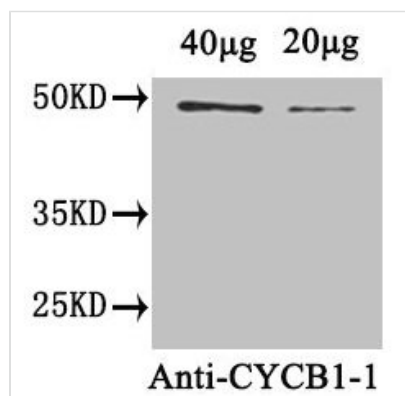




# CYCB1-1 Antibody

<b>Product Code</b>	CSB-PA339075LA01DOA
<b>Storage</b>	Upon receipt, store at -20°C or -80°C. Avoid repeated freeze.
<b>Uniprot No.</b>	P30183
<b>Immunogen</b>	Recombinant Arabidopsis thaliana Cyclin-B1-1 protein (1-428AA)
<b>Raised In</b>	Rabbit
<b>Species Reactivity</b>	Arabidopsis thaliana
<b>Tested Applications</b>	ELISA, WB; Recommended dilution: WB:1:1000-1:5000
<b>Form</b>	Liquid
<b>Conjugate</b>	Non-conjugated
<b>Storage Buffer</b>	Preservative: 0.03% Proclin 300 Constituents: 50% Glycerol, 0.01M PBS, PH 7.4
<b>Purification Method</b>	>95%, Protein G purified
<b>Isotype</b>	IgG
<b>Clonality</b>	Polyclonal
<b>Alias</b>	Cyclin-B1-1 (Cyc1-At) (G2/mitotic-specific cyclin-B1-1) (CycB1;1), CYCB1-1, CYC1
<b>Immunogen Species</b>	Arabidopsis thaliana
<b>Research Area</b>	Others
<b>Target Names</b>	CYCB1-1

## Image



### Western Blot

Positive WB detected in: Arabidopsis thaliana (40µg, 20µg)

All lanes: CYCB1-1 antibody at 1.8µg/ml

Secondary

Goat polyclonal to rabbit IgG at 1/50000 dilution

Predicted band size: 49 kDa

Observed band size: 49 kDa