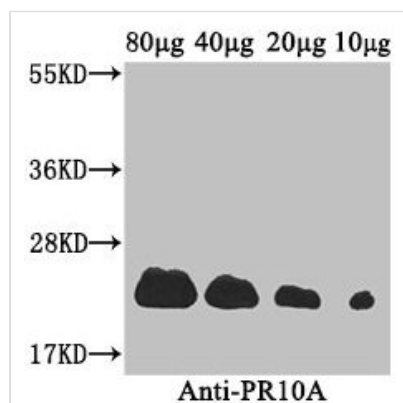




PR10A Antibody

Product Code	CSB-PA381182LA01CXF
Storage	Upon receipt, store at -20°C or -80°C. Avoid repeated freeze.
Uniprot No.	A2A1A1
Immunogen	Recombinant Coptis japonica S-norcochlorine synthase 2 protein (20-196AA)
Raised In	Rabbit
Species Reactivity	Coptis japonica
Tested Applications	ELISA, WB; Recommended dilution: WB:1:1000-1:5000
Form	Liquid
Conjugate	Non-conjugated
Storage Buffer	Preservative: 0.03% Proclin 300 Constituents: 50% Glycerol, 0.01M PBS, PH 7.4
Purification Method	>95%, Protein G purified
Isotype	IgG
Clonality	Polyclonal
Alias	S-norcochlorine synthase 2 (EC 4.2.1.78) (Pathogenesis related protein 10A) (CjPR10A), PR10A
Immunogen Species	Coptis japonica
Research Area	Others
Target Names	PR10A

Image



Western Blot

Positive WB detected in: Coptis japonica (80μg, 40μg, 20μg, 10μg)

All lanes: PR10A antibody at 3.4μg/ml

Secondary

Goat polyclonal to rabbit IgG at 1/50000 dilution

Predicted band size: 23 kDa

Observed band size: 23 kDa