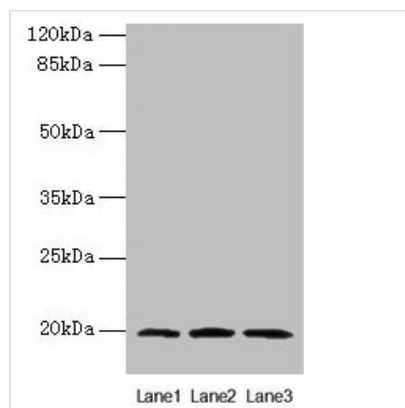




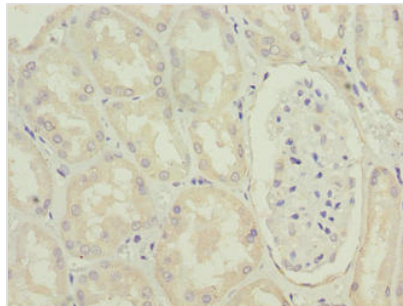
MRPL49 Antibody

Product Code	CSB-PA613399LA01HU
Storage	Upon receipt, store at -20°C or -80°C. Avoid repeated freeze.
Uniprot No.	Q13405
Immunogen	Recombinant Human 39S ribosomal protein L49, mitochondrial protein (1-166AA)
Raised In	Rabbit
Species Reactivity	Human, Mouse
Tested Applications	ELISA, WB, IHC; Recommended dilution: WB:1:1000-1:5000, IHC:1:20-1:200
Form	Liquid
Conjugate	Non-conjugated
Storage Buffer	Preservative: 0.03% Proclin 300 Constituents: 50% Glycerol, 0.01M PBS, PH 7.4
Purification Method	Antigen Affinity Purified
Isotype	IgG
Clonality	Polyclonal
Alias	39S ribosomal protein L49, mitochondrial (L49mt) (MRP-L49) (Mitochondrial large ribosomal subunit protein mL49) (Neighbor of FAU) (NOF) (Protein NOF1), MRPL49, C11orf4 NOF1
Immunogen Species	Homo sapiens (Human)
Research Area	Epigenetics and Nuclear Signaling
Target Names	MRPL49

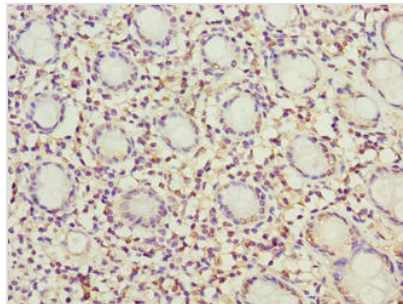
Image



Western blot
 All lanes: MRPL49 antibody at 0.6µg/ml
 Lane 1: Colo320 whole cell lysate
 Lane 2: Mouse liver tissue
 Lane 3: Mouse kidney tissue
 Secondary
 Goat polyclonal to rabbit IgG at 1/10000 dilution
 Predicted band size: 20 kDa
 Observed band size: 20 kDa



Immunohistochemistry of paraffin-embedded human kidney tissue using CSB-PA613399LA01HU at dilution of 1:100



Immunohistochemistry of paraffin-embedded human colon tissue using CSB-PA613399LA01HU at dilution of 1:100