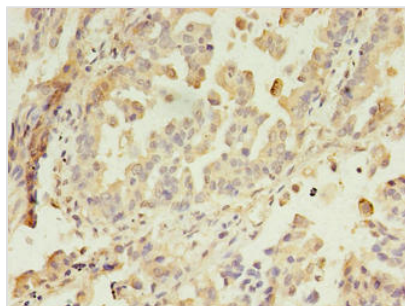




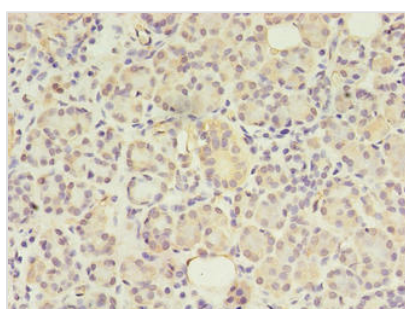
GIT2 Antibody

Product Code	CSB-PA613489LA01HU
Storage	Upon receipt, store at -20°C or -80°C. Avoid repeated freeze.
Uniprot No.	Q14161
Immunogen	Recombinant Human ARF GTPase-activating protein GIT2 protein (1-603AA)
Raised In	Rabbit
Species Reactivity	Human
Tested Applications	ELISA, IHC; Recommended dilution: IHC:1:20-1:200
Form	Liquid
Conjugate	Non-conjugated
Storage Buffer	Preservative: 0.03% Proclin 300 Constituents: 50% Glycerol, 0.01M PBS, PH 7.4
Purification Method	>95%, Protein G purified
Isotype	IgG
Clonality	Polyclonal
Alias	ARF GTPase-activating protein GIT2 (ARF GAP GIT2) (Cool-interacting tyrosine-phosphorylated protein 2) (CAT-2) (CAT2) (G protein-coupled receptor kinase-interactor 2) (GRK-interacting protein 2), GIT2, KIAA0148
Immunogen Species	Homo sapiens (Human)
Research Area	Signal Transduction
Target Names	GIT2

Image



Immunohistochemistry of paraffin-embedded human lung cancer using CSB-PA613489LA01HU at dilution of 1:100



Immunohistochemistry of paraffin-embedded human pancreatic tissue using CSB-PA613489LA01HU at dilution of 1:100



Usage

For Research Use Only. Not for use in diagnostic or therapeutic procedures.