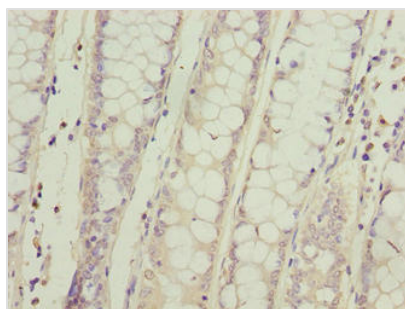




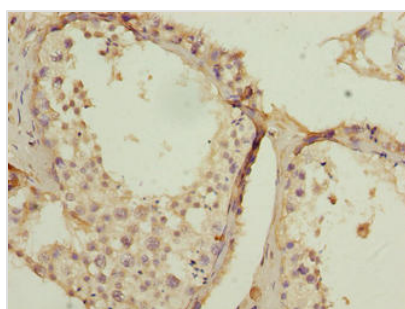
SPCS2 Antibody

| | |
|----------------------------|--|
| Product Code | CSB-PA617993LA01HU |
| Storage | Upon receipt, store at -20°C or -80°C. Avoid repeated freeze. |
| Uniprot No. | Q15005 |
| Immunogen | Recombinant Human Signal peptidase complex subunit 2 protein (7-86AA) |
| Raised In | Rabbit |
| Species Reactivity | Human |
| Tested Applications | ELISA, WB, IHC, IF; Recommended dilution: WB:1:500-1:5000, IHC:1:20-1:200, IF:1:50-1:200 |
| Form | Liquid |
| Conjugate | Non-conjugated |
| Storage Buffer | Preservative: 0.03% Proclin 300 Constituents: 50% Glycerol, 0.01M PBS, PH 7.4 |
| Purification Method | >95%, Protein G purified |
| Isotype | IgG |
| Clonality | Polyclonal |
| Alias | Signal peptidase complex subunit 2 (EC 3.4.-.-) (Microsomal signal peptidase 25 kDa subunit) (SPase 25 kDa subunit), SPCS2, KIAA0102 SPC25 |
| Immunogen Species | Homo sapiens (Human) |
| Research Area | Signal Transduction |
| Target Names | SPCS2 |

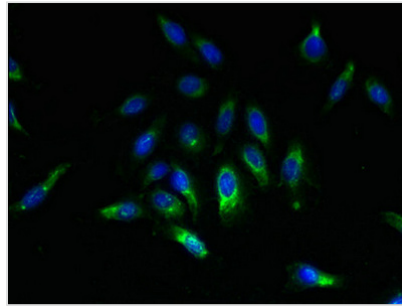
Image



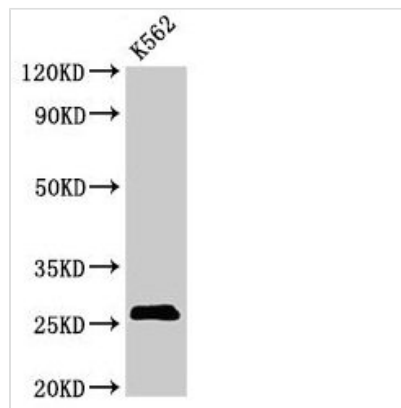
Immunohistochemistry of paraffin-embedded human colon cancer using CSB-PA617993LA01HU at dilution of 1:100



Immunohistochemistry of paraffin-embedded human testis tissue using CSB-PA617993LA01HU at dilution of 1:100



Immunofluorescent analysis of HeLa cells using CSB-PA617993LA01HU at dilution of 1:100 and Alexa Fluor 488-conjugated AffiniPure Goat Anti-Rabbit IgG(H+L)

**Western Blot**

Positive WB detected in: K562 whoel cell lysate

All lanes: SPCS2 antibody at 3µg/ml

Secondary

Goat polyclonal to rabbit IgG at 1/50000 dilution

Predicted band size: 26 kDa

Observed band size: 26 kDa

Usage

For Research Use Only. Not for use in diagnostic or therapeutic procedures.