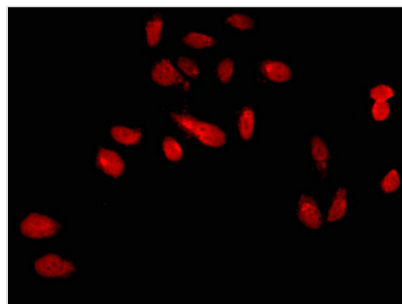




# KLF1 Antibody

<b>Product Code</b>	CSB-PA619760LA01HU
<b>Storage</b>	Upon receipt, store at -20°C or -80°C. Avoid repeated freeze.
<b>Uniprot No.</b>	Q13351
<b>Immunogen</b>	Recombinant Human Krueppel-like factor 1 protein (1-362AA)
<b>Raised In</b>	Rabbit
<b>Species Reactivity</b>	Human
<b>Tested Applications</b>	ELISA, IF; Recommended dilution: IF:1:50-1:200
<b>Form</b>	Liquid
<b>Conjugate</b>	Non-conjugated
<b>Storage Buffer</b>	Preservative: 0.03% Proclin 300 Constituents: 50% Glycerol, 0.01M PBS, PH 7.4
<b>Purification Method</b>	>95%, Protein G purified
<b>Isotype</b>	IgG
<b>Clonality</b>	Polyclonal
<b>Alias</b>	Krueppel-like factor 1 (Erythroid krueppel-like transcription factor) (EKLF), KLF1, EKLF
<b>Immunogen Species</b>	Homo sapiens (Human)
<b>Research Area</b>	Epigenetics and Nuclear Signaling
<b>Target Names</b>	KLF1

## Image



Immunofluorescent analysis of HeLa cells using CSB-PA619760LA01HU at dilution of 1:100 and Cy3-conjugated Goat Anti-Rabbit IgG

## Usage

For Research Use Only. Not for use in diagnostic or therapeutic procedures.