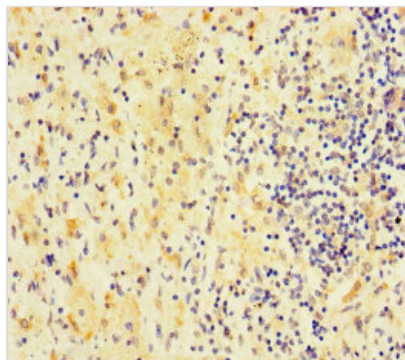




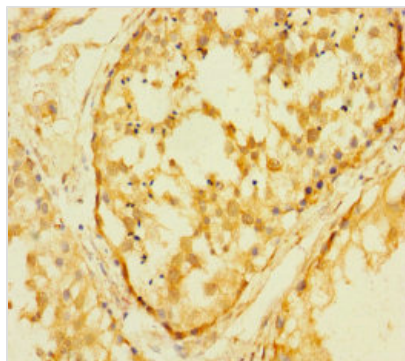
RTL8B Antibody

| | |
|----------------------------|--|
| Product Code | CSB-PA622040LA01HU |
| Storage | Upon receipt, store at -20°C or -80°C. Avoid repeated freeze. |
| Uniprot No. | Q17RB0 |
| Immunogen | Recombinant Human Retrotransposon Gag-like protein 8B protein (1-113AA) |
| Raised In | Rabbit |
| Species Reactivity | Human |
| Tested Applications | ELISA, IHC; Recommended dilution: IHC:1:20-1:200 |
| Form | Liquid |
| Conjugate | Non-conjugated |
| Storage Buffer | Preservative: 0.03% Proclin 300 Constituents: 50% Glycerol, 0.01M PBS, PH 7.4 |
| Purification Method | >95%, Protein G purified |
| Isotype | IgG |
| Clonality | Polyclonal |
| Alias | Retrotransposon Gag-like protein 8B (Mammalian retrotransposon derived protein 8B), RTL8B, CXX1C FAM127C MAR8B |
| Immunogen Species | Homo sapiens (Human) |
| Research Area | Others |
| Target Names | RTL8B |

Image



Immunohistochemistry of paraffin-embedded human lung cancer using CSB-PA622040LA01HU at dilution of 1:100



Immunohistochemistry of paraffin-embedded human testis tissue using CSB-PA622040LA01HU at dilution of 1:100