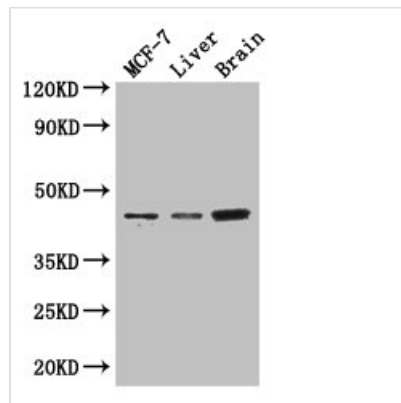




KCNJ11 Antibody

Product Code	CSB-PA622781LA01HU
Storage	Upon receipt, store at -20°C or -80°C. Avoid repeated freeze.
Uniprot No.	Q14654
Immunogen	Recombinant Human ATP-sensitive inward rectifier potassium channel 11 protein (172-390AA)
Raised In	Rabbit
Species Reactivity	Human, Mouse
Tested Applications	ELISA, WB, IHC; Recommended dilution: WB:1:500-1:5000, IHC:1:20-1:200
Form	Liquid
Conjugate	Non-conjugated
Storage Buffer	Preservative: 0.03% Proclin 300 Constituents: 50% Glycerol, 0.01M PBS, PH 7.4
Purification Method	>95%, Protein G purified
Isotype	IgG
Clonality	Polyclonal
Alias	ATP-sensitive inward rectifier potassium channel 11 (IKATP) (Inward rectifier K(+) channel Kir6.2) (Potassium channel, inwardly rectifying subfamily J member 11), KCNJ11
Immunogen Species	Homo sapiens (Human)
Research Area	Neuroscience
Target Names	KCNJ11

Image



Western Blot

Positive WB detected in: MCF-7 whole cell lysate, Mouse liver tissue, Mouse brain tissue

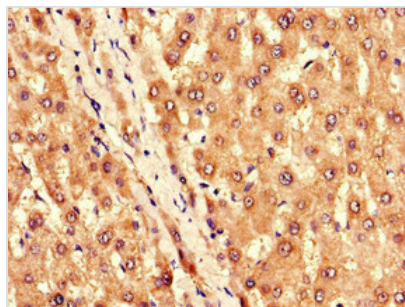
All lanes: KCNJ11 antibody at 3µg/ml

Secondary

Goat polyclonal to rabbit IgG at 1/50000 dilution

Predicted band size: 44, 34 kDa

Observed band size: 44 kDa



Immunohistochemistry of paraffin-embedded human liver tissue using CSB-PA622781LA01HU at dilution of 1:100

Usage

For Research Use Only. Not for use in diagnostic or therapeutic procedures.