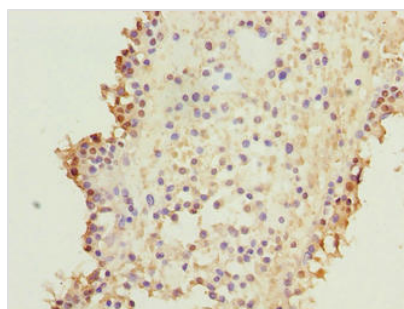




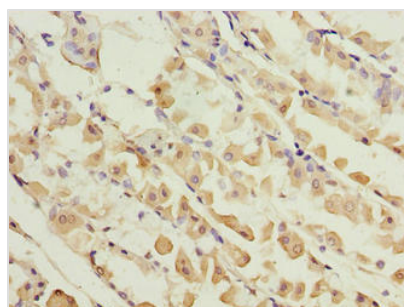
KIF26B Antibody

| | |
|----------------------------|--|
| Product Code | CSB-PA642548LA01HU |
| Storage | Upon receipt, store at -20°C or -80°C. Avoid repeated freeze. |
| Uniprot No. | Q2KJY2 |
| Immunogen | Recombinant Human Kinesin-like protein KIF26B protein (8-133AA) |
| Raised In | Rabbit |
| Species Reactivity | Human |
| Tested Applications | ELISA, IHC; Recommended dilution: IHC:1:20-1:200 |
| Form | Liquid |
| Conjugate | Non-conjugated |
| Storage Buffer | Preservative: 0.03% Proclin 300 Constituents: 50% Glycerol, 0.01M PBS, PH 7.4 |
| Purification Method | >95%, Protein G purified |
| Isotype | IgG |
| Clonality | Polyclonal |
| Alias | Kinesin-like protein KIF26B, KIF26B |
| Immunogen Species | Homo sapiens (Human) |
| Research Area | Others |
| Target Names | KIF26B |

Image



Immunohistochemistry of paraffin-embedded human breast cancer using CSB-PA642548LA01HU at dilution of 1:100



Immunohistochemistry of paraffin-embedded human gastric cancer using CSB-PA642548LA01HU at dilution of 1:100