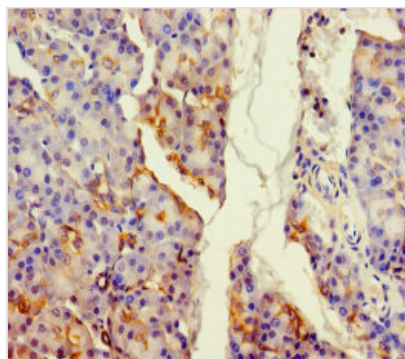




ALDH1L2 Antibody

Product Code	CSB-PA659640LA01HU
Storage	Upon receipt, store at -20°C or -80°C. Avoid repeated freeze.
Uniprot No.	Q3SY69
Immunogen	Recombinant Human Mitochondrial 10-formyltetrahydrofolate dehydrogenase protein (263-562AA)
Raised In	Rabbit
Species Reactivity	Human
Tested Applications	ELISA, IHC; Recommended dilution: IHC:1:20-1:200
Form	Liquid
Conjugate	Non-conjugated
Storage Buffer	Preservative: 0.03% Proclin 300 Constituents: 50% Glycerol, 0.01M PBS, PH 7.4
Purification Method	>95%, Protein G purified
Isotype	IgG
Clonality	Polyclonal
Alias	Mitochondrial 10-formyltetrahydrofolate dehydrogenase (Mitochondrial 10-FTHFDH) (mtFDH) (EC 1.5.1.6) (Aldehyde dehydrogenase family 1 member L2), ALDH1L2
Immunogen Species	Homo sapiens (Human)
Research Area	Signal Transduction
Target Names	ALDH1L2

Image



Immunohistochemistry of paraffin-embedded human pancreatic tissue using CSB-PA659640LA01HU at dilution of 1:100

Usage

For Research Use Only. Not for use in diagnostic or therapeutic procedures.