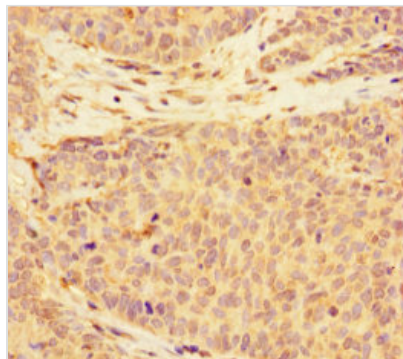


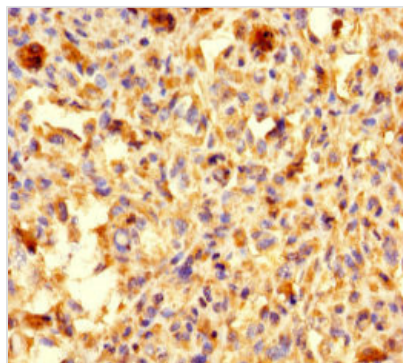


C2CD6 Antibody

Product Code	CSB-PA681515LA01HU
Storage	Upon receipt, store at -20°C or -80°C. Avoid repeated freeze.
Uniprot No.	Q53TS8
Immunogen	Recombinant Human C2 calcium-dependent domain-containing protein 6 protein (401-623AA)
Raised In	Rabbit
Species Reactivity	Human
Tested Applications	ELISA, IHC; Recommended dilution: IHC:1:20-1:200
Form	Liquid
Conjugate	Non-conjugated
Storage Buffer	Preservative: 0.03% Proclin 300 Constituents: 50% Glycerol, 0.01M PBS, PH 7.4
Purification Method	>95%, Protein G purified
Isotype	IgG
Clonality	Polyclonal
Alias	C2 calcium-dependent domain-containing protein 6 (Amyotrophic lateral sclerosis 2 chromosomal region candidate gene 11 protein), C2CD6, ALS2CR11
Immunogen Species	Homo sapiens (Human)
Research Area	Cell Biology
Target Names	C2CD6

Image


Immunohistochemistry of paraffin-embedded human ovarian cancer using CSB-PA681515LA01HU at dilution of 1:100



Immunohistochemistry of paraffin-embedded human melanoma using CSB-PA681515LA01HU at dilution of 1:100

Usage

For Research Use Only. Not for use in diagnostic or therapeutic procedures.