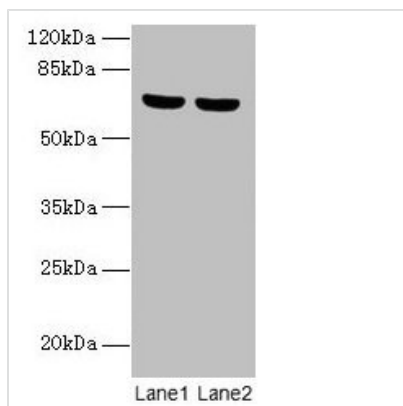




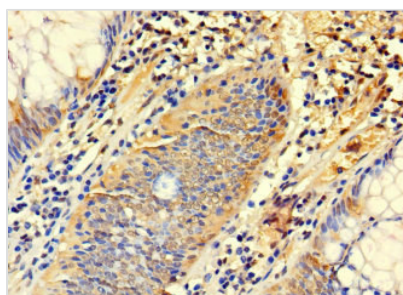
SYTL3 Antibody

Product Code	CSB-PA687190LA01HU
Storage	Upon receipt, store at -20°C or -80°C. Avoid repeated freeze.
Uniprot No.	Q4VX76
Immunogen	Recombinant Human Synaptotagmin-like protein 3 protein (1-300AA)
Raised In	Rabbit
Species Reactivity	Human
Tested Applications	ELISA, WB, IHC; Recommended dilution: WB:1:1000-1:5000, IHC:1:20-1:200
Form	Liquid
Conjugate	Non-conjugated
Storage Buffer	Preservative: 0.03% Proclin 300 Constituents: 50% Glycerol, 0.01M PBS, PH 7.4
Purification Method	>95%, Protein G purified
Isotype	IgG
Clonality	Polyclonal
Alias	Synaptotagmin-like protein 3 (Exophilin-6), SYTL3, SLP3
Immunogen Species	Homo sapiens (Human)
Research Area	Signal Transduction
Target Names	SYTL3

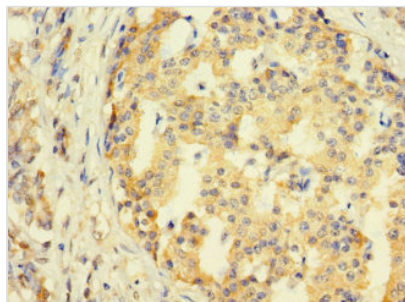
Image



Western blot
 All lanes: SYTL3 antibody at 5µg/ml
 Lane 1: A549 whole cell lysate
 Lane 2: THP-1 whole cell lysate
 Secondary
 Goat polyclonal to rabbit IgG at 1/10000 dilution
 Predicted band size: 69, 61 kDa
 Observed band size: 69 kDa



Immunohistochemistry of paraffin-embedded human colon cancer using CSB-PA687190LA01HU at dilution of 1:100



Immunohistochemistry of paraffin-embedded human pancreatic cancer using CSB-PA687190LA01HU at dilution of 1:100

Usage

For Research Use Only. Not for use in diagnostic or therapeutic procedures.