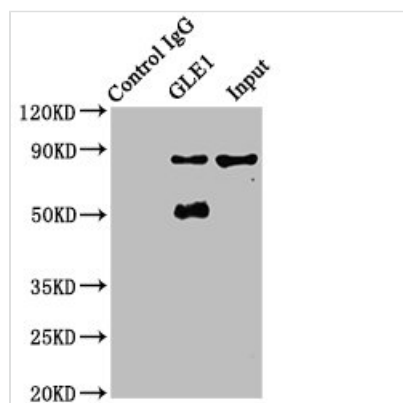




# GLE1 Antibody

<b>Product Code</b>	CSB-PA700651EA01HU
<b>Storage</b>	Upon receipt, store at -20°C or -80°C. Avoid repeated freeze.
<b>Uniprot No.</b>	Q53GS7
<b>Immunogen</b>	Recombinant Human Nucleoporin GLE1 protein (141-380AA)
<b>Raised In</b>	Rabbit
<b>Species Reactivity</b>	Human
<b>Tested Applications</b>	ELISA, WB, IHC, IF, IP; Recommended dilution: WB:1:500-1:5000, IHC:1:20-1:200, IF:1:50-1:200, IP:1:200-1:2000
<b>Form</b>	Liquid
<b>Conjugate</b>	Non-conjugated
<b>Storage Buffer</b>	Preservative: 0.03% Proclin 300 Constituents: 50% Glycerol, 0.01M PBS, PH 7.4
<b>Purification Method</b>	>95%, Protein G purified
<b>Isotype</b>	IgG
<b>Clonality</b>	Polyclonal
<b>Alias</b>	Nucleoporin GLE1 (hGLE1) (GLE1-like protein), GLE1, GLE1L
<b>Immunogen Species</b>	Homo sapiens (Human)
<b>Research Area</b>	Tags & Cell Markers
<b>Target Names</b>	GLE1

## Image



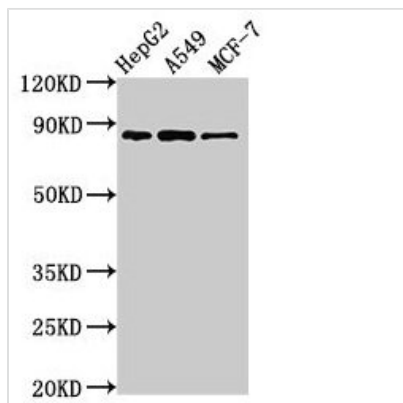
Immunoprecipitating GLE1 in A549 whole cell lysate

Lane 1: Rabbit control IgG instead of CSB-PA700651EA01HU in A549 whole cell lysate.

For western blotting, a HRP-conjugated Protein G antibody was used as the secondary antibody (1/2000)

Lane 2: CSB-PA700651EA01HU (6µg) + A549 whole cell lysate (500µg)

Lane 3: A549 whole cell lysate (20µg)



**Western Blot**

Positive WB detected in: HepG2 whole cell lysate, A549 whole cell lysate, MCF-7 whole cell lysate

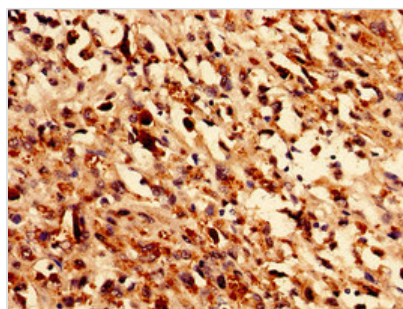
All lanes: GLE1 antibody at 2.8µg/ml

Secondary

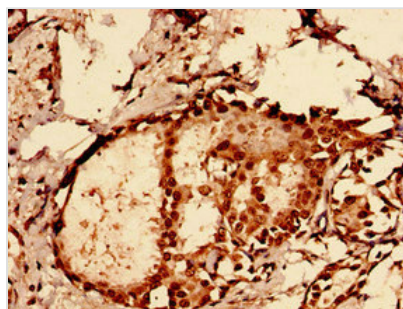
Goat polyclonal to rabbit IgG at 1/50000 dilution

Predicted band size: 80, 76 kDa

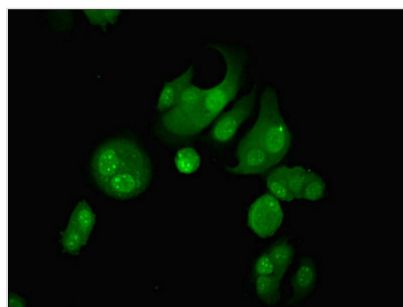
Observed band size: 80 kDa



Immunocytochemistry analysis of human melanoma using CSB-PA700651EA01HU at dilution of 1:100



Immunocytochemistry analysis of human breast cancer using CSB-PA700651EA01HU at dilution of 1:100



Immunofluorescent analysis of MCF-7 cells using CSB-PA700651EA01HU at dilution of 1:100 and Alexa Fluor 488-conjugated AffiniPure Goat Anti-Rabbit IgG(H+L)

**Usage**

For Research Use Only. Not for use in diagnostic or therapeutic procedures.