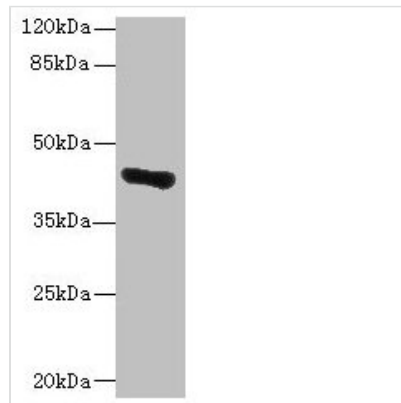




GLT8D1 Antibody

Product Code	CSB-PA715010LA01HU
Storage	Upon receipt, store at -20°C or -80°C. Avoid repeated freeze.
Uniprot No.	Q68CQ7
Immunogen	Recombinant Human Glycosyltransferase 8 domain-containing protein 1 protein (33-332AA)
Raised In	Rabbit
Species Reactivity	Human, Mouse
Tested Applications	ELISA, WB, IHC, IF; Recommended dilution: WB:1:500-1:2000, IHC:1:20-1:200, IF:1:50-1:200
Form	Liquid
Conjugate	Non-conjugated
Storage Buffer	Preservative: 0.03% Proclin 300 Constituents: 50% Glycerol, 0.01M PBS, PH 7.4
Purification Method	>95%, Protein G purified
Isotype	IgG
Clonality	Polyclonal
Alias	Glycosyltransferase 8 domain-containing protein 1 (EC 2.4.1.-), GLT8D1, GALA4A
Immunogen Species	Homo sapiens (Human)
Research Area	Cell Biology
Target Names	GLT8D1

Image



Western blot

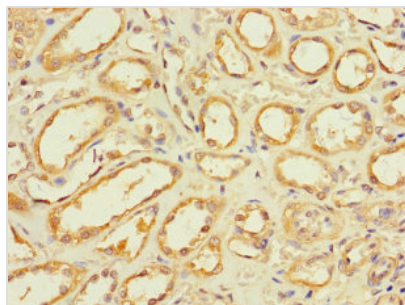
All lanes: GLT8D1 antibody at 10µg/ml + Mouse liver tissue

Secondary

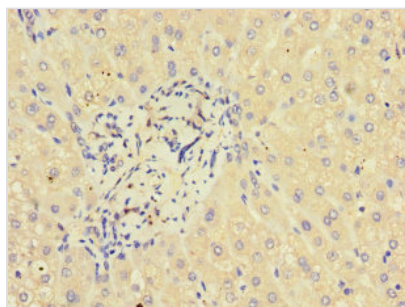
Goat polyclonal to rabbit IgG at 1/10000 dilution

Predicted band size: 42, 29 kDa

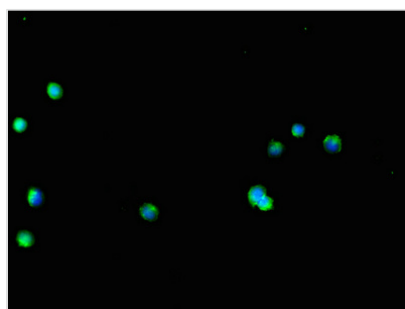
Observed band size: 42 kDa



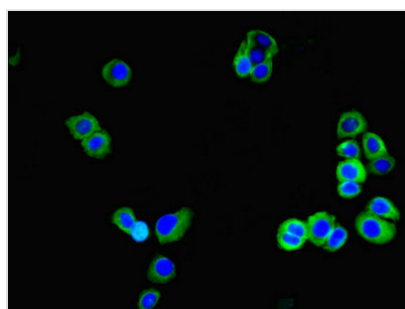
Immunohistochemistry of paraffin-embedded human kidney tissue using CSB-PA715010LA01HU at dilution of 1:100



Immunohistochemistry of paraffin-embedded human liver tissue using CSB-PA715010LA01HU at dilution of 1:100



Immunofluorescent analysis of HepG2 cells using CSB-PA715010LA01HU at dilution of 1:100 and Alexa Fluor 488-conjugated AffiniPure Goat Anti-Rabbit IgG(H+L)



Immunofluorescent analysis of PC-3 cells using CSB-PA715010LA01HU at dilution of 1:100 and Alexa Fluor 488-conjugated AffiniPure Goat Anti-Rabbit IgG(H+L)

Usage

For Research Use Only. Not for use in diagnostic or therapeutic procedures.