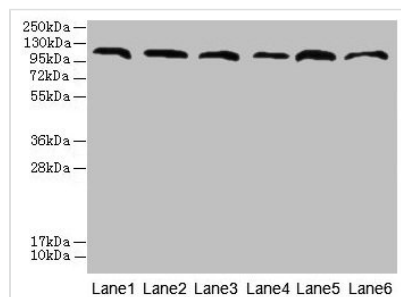




CATSPERE Antibody

Product Code	CSB-PA719393LA01HU
Storage	Upon receipt, store at -20°C or -80°C. Avoid repeated freeze.
Uniprot No.	Q5SY80
Immunogen	Recombinant Human Cation channel sperm-associated protein subunit epsilon protein (601-832AA)
Raised In	Rabbit
Species Reactivity	Human, Mouse
Tested Applications	ELISA, WB, IHC, IF; Recommended dilution: WB:1:500-1:5000, IHC:1:20-1:200, IF:1:50-1:200
Form	Liquid
Conjugate	Non-conjugated
Storage Buffer	Preservative: 0.03% Proclin 300 Constituents: 50% Glycerol, 0.01M PBS, PH 7.4
Purification Method	>95%, Protein G purified
Isotype	IgG
Clonality	Polyclonal
Alias	Cation channel sperm-associated protein subunit epsilon (CatSper-epsilon) (CatSperepsilon), CATSPERE, C1orf101
Immunogen Species	Homo sapiens (Human)
Research Area	Cell Biology
Target Names	CATSPERE

Image



Western blot

All lanes: CATSPERE antibody at 6μg/ml

Lane 1: U87 whole cell lysate

Lane 2: HepG2 whole cell lysate

Lane 3: A549 whole cell lysate

Lane 4: Mouse lung tissue

Lane 5: Mouse liver tissue

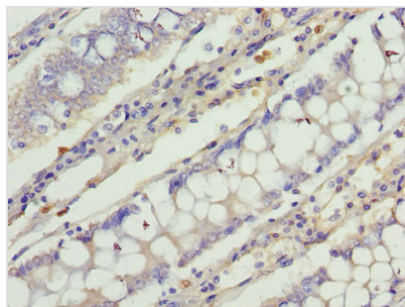
Lane 6: PC-3 whole cell lysate

Secondary

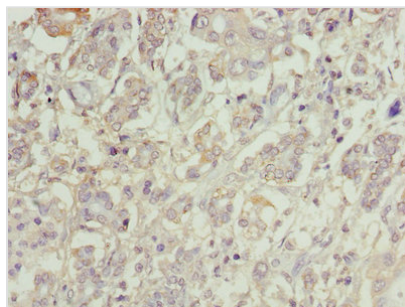
Goat polyclonal to rabbit IgG at 1/10000 dilution

Predicted band size: 110, 96, 93 kDa

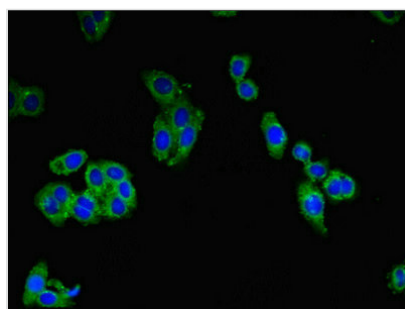
Observed band size: 110 kDa



Immunohistochemistry of paraffin-embedded human colon cancer using CSB-PA719393LA01HU at dilution of 1:100



Immunohistochemistry of paraffin-embedded human pancreatic cancer using CSB-PA719393LA01HU at dilution of 1:100



Immunofluorescent analysis of HepG2 cells using CSB-PA719393LA01HU at dilution of 1:100 and Alexa Fluor 488-conjugated AffiniPure Goat Anti-Rabbit IgG(H+L)