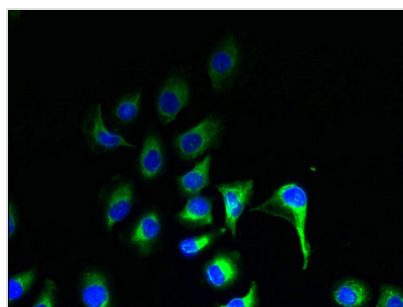




ZDHHC20 Antibody

| | |
|----------------------------|---|
| Product Code | CSB-PA722800LA01HU |
| Storage | Upon receipt, store at -20°C or -80°C. Avoid repeated freeze. |
| Uniprot No. | Q5W0Z9 |
| Immunogen | Recombinant Human Probable palmitoyltransferase ZDHHC20 protein (75-130AA) |
| Raised In | Rabbit |
| Species Reactivity | Human |
| Tested Applications | ELISA, IF; Recommended dilution: IF:1:50-1:200 |
| Form | Liquid |
| Conjugate | Non-conjugated |
| Storage Buffer | Preservative: 0.03% Proclin 300 Constituents: 50% Glycerol, 0.01M PBS, PH 7.4 |
| Purification Method | >95%, Protein G purified |
| Isotype | IgG |
| Clonality | Polyclonal |
| Alias | Probable palmitoyltransferase ZDHHC20 (EC 2.3.1.225) (Zinc finger DHHC domain-containing protein 20) (DHHC-20), ZDHHC20 |
| Immunogen Species | Homo sapiens (Human) |
| Research Area | Cell Biology |
| Target Names | ZDHHC20 |

Image



Immunofluorescent analysis of A549 cells using CSB-PA722800LA01HU at dilution of 1:100 and Alexa Fluor 488-conjugated AffiniPure Goat Anti-Rabbit IgG(H+L)

Usage

For Research Use Only. Not for use in diagnostic or therapeutic procedures.