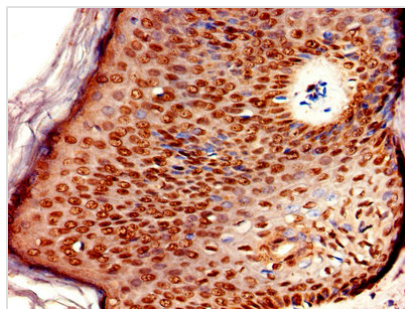




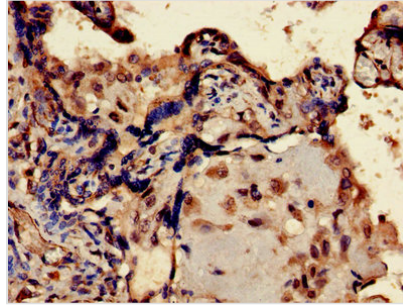
ERVK-6 Antibody

Product Code	CSB-PA724336LA01HU
Storage	Upon receipt, store at -20°C or -80°C. Avoid repeated freeze.
Uniprot No.	Q69384
Immunogen	Recombinant Human Endogenous retrovirus group K member 6 Env polyprotein protein (90-632AA)
Raised In	Rabbit
Species Reactivity	Human
Tested Applications	ELISA, IHC, IF; Recommended dilution: IHC:1:20-1:200, IF:1:50-1:200
Form	Liquid
Conjugate	Non-conjugated
Storage Buffer	Preservative: 0.03% Proclin 300 Constituents: 50% Glycerol, 0.01M PBS, PH 7.4
Purification Method	>95%, Protein G purified
Isotype	IgG
Clonality	Polyclonal
Alias	Endogenous retrovirus group K member 6 Env polyprotein (EnvK2 protein) (Envelope polyprotein) (HERV-K(C7) envelope protein) (HERV-K(HML-2.HOM) envelope protein) (HERV-K108 envelope protein) (HERV-K_7p22.1 provirus ancestral Env polyprotein) [Cleaved into: Surface protein (SU); Transmembrane protein (TM)], ERVK-6, ERVK6
Immunogen Species	Homo sapiens (Human)
Research Area	Others
Target Names	ERVK-6

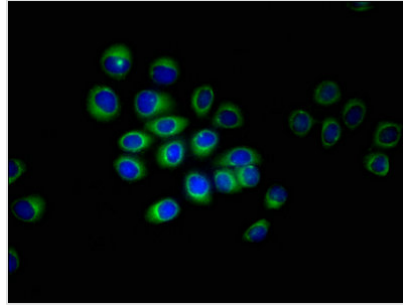
Image



Immunohistochemistry of paraffin-embedded human skin tissue using CSB-PA724336LA01HU at dilution of 1:100



Immunohistochemistry of paraffin-embedded human placenta tissue using CSB-PA724336LA01HU at dilution of 1:100



Immunofluorescent analysis of A549 cells using CSB-PA724336LA01HU at dilution of 1:100 and Alexa Fluor 488-conjugated AffiniPure Goat Anti-Rabbit IgG(H+L)

Usage

For Research Use Only. Not for use in diagnostic or therapeutic procedures.