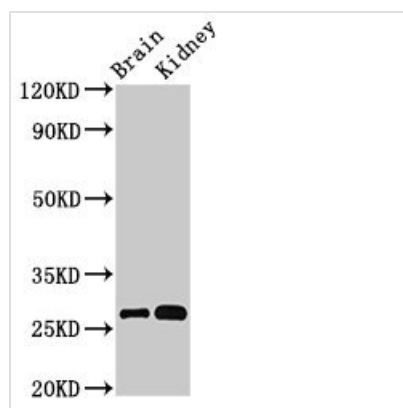




OLFML2B Antibody

Product Code	CSB-PA734650LA01HU
Storage	Upon receipt, store at -20°C or -80°C. Avoid repeated freeze.
Uniprot No.	Q68BL8
Immunogen	Recombinant Human Olfactomedin-like protein 2B protein (451-750AA)
Raised In	Rabbit
Species Reactivity	Human, Mouse
Tested Applications	ELISA, WB, IHC; Recommended dilution: WB:1:500-1:5000, IHC:1:20-1:200
Form	Liquid
Conjugate	Non-conjugated
Storage Buffer	Preservative: 0.03% Proclin 300 Constituents: 50% Glycerol, 0.01M PBS, PH 7.4
Purification Method	>95%, Protein G purified
Isotype	IgG
Clonality	Polyclonal
Alias	Olfactomedin-like protein 2B (Photomedin-2), OLFML2B
Immunogen Species	Homo sapiens (Human)
Research Area	Neuroscience
Target Names	OLFML2B

Image



Western Blot

Positive WB detected in: Mouse brain tissue,
Mouse kidney tissue

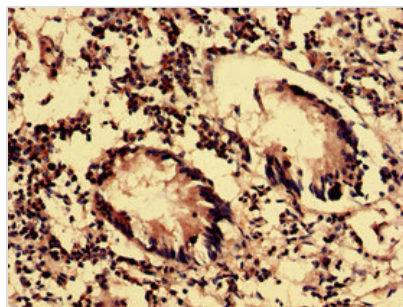
All lanes: OLFML2B antibody at 3µg/ml

Secondary

Goat polyclonal to rabbit IgG at 1/50000 dilution

Predicted band size: 84, 28 kDa

Observed band size: 28 kDa



Immunohistochemistry analysis of human appendix tissue using CSB-PA734650LA01HU at dilution of 1:100