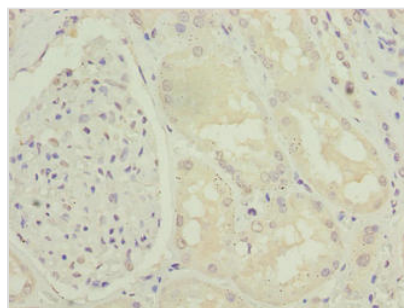




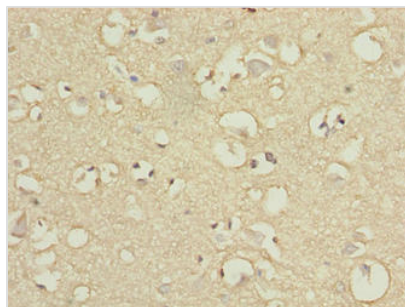
ENPP6 Antibody

Product Code	CSB-PA740915LA01HU
Storage	Upon receipt, store at -20°C or -80°C. Avoid repeated freeze.
Uniprot No.	Q6UWR7
Immunogen	Recombinant Human Ectonucleotide pyrophosphatase/phosphodiesterase family member 6 protein (31-330AA)
Raised In	Rabbit
Species Reactivity	Human
Tested Applications	ELISA, IHC, IF; Recommended dilution: IHC:1:20-1:200, IF:1:50-1:200
Form	Liquid
Conjugate	Non-conjugated
Storage Buffer	Preservative: 0.03% Proclin 300 Constituents: 50% Glycerol, 0.01M PBS, PH 7.4
Purification Method	>95%, Protein G purified
Isotype	IgG
Clonality	Polyclonal
Alias	Ectonucleotide pyrophosphatase/phosphodiesterase family member 6 (E-NPP 6) (NPP-6) (EC 3.1.4.-) (EC 3.1.4.38) (Choline-specific glycerophosphodiester phosphodiesterase) (Glycerophosphocholine cholinephosphodiesterase) (GPC-Cpde), ENPP6
Immunogen Species	Homo sapiens (Human)
Research Area	Signal Transduction
Target Names	ENPP6

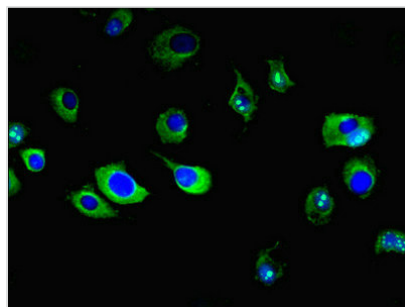
Image



Immunohistochemistry of paraffin-embedded human kidney tissue using CSB-PA740915LA01HU at dilution of 1:100



Immunohistochemistry of paraffin-embedded human brain tissue using CSB-PA740915LA01HU at dilution of 1:100



Immunofluorescent analysis of MCF-7 cells using CSB-PA740915LA01HU at dilution of 1:100 and Alexa Fluor 488-conjugated AffiniPure Goat Anti-Rabbit IgG(H+L)

Usage

For Research Use Only. Not for use in diagnostic or therapeutic procedures.