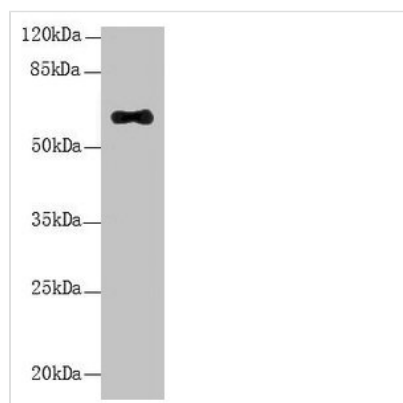




LRRC31 Antibody

Product Code	CSB-PA744274LA01HU
Storage	Upon receipt, store at -20°C or -80°C. Avoid repeated freeze.
Uniprot No.	Q6UY01
Immunogen	Recombinant Human Leucine-rich repeat-containing protein 31 protein (1-300AA)
Raised In	Rabbit
Species Reactivity	Human, Mouse
Tested Applications	ELISA, WB, IHC; Recommended dilution: WB:1:500-1:5000, IHC:1:20-1:200
Form	Liquid
Conjugate	Non-conjugated
Storage Buffer	Preservative: 0.03% Proclin 300 Constituents: 50% Glycerol, 0.01M PBS, PH 7.4
Purification Method	>95%, Protein G purified
Isotype	IgG
Clonality	Polyclonal
Alias	Leucine-rich repeat-containing protein 31, LRRC31
Immunogen Species	Homo sapiens (Human)
Research Area	Cell Biology
Target Names	LRRC31

Image



Western Blot

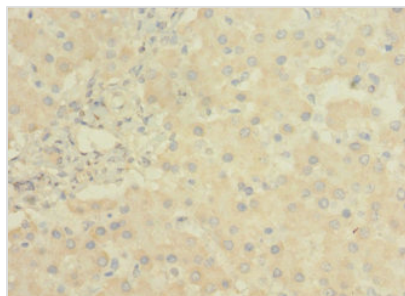
All lanes: LRRC31 antibody at 5µg/ml + Mouse small intestine tissue

Secondary

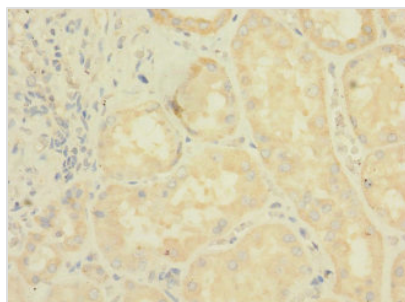
Goat polyclonal to rabbit IgG at 1/10000 dilution

Predicted band size: 62, 56, 39, 49 kDa

Observed band size: 62 kDa



Immunohistochemistry of paraffin-embedded human liver tissue using CSB-PA744274LA01HU at dilution of 1:100



Immunohistochemistry of paraffin-embedded human kidney tissue using CSB-PA744274LA01HU at dilution of 1:100

Usage

For Research Use Only. Not for use in diagnostic or therapeutic procedures.