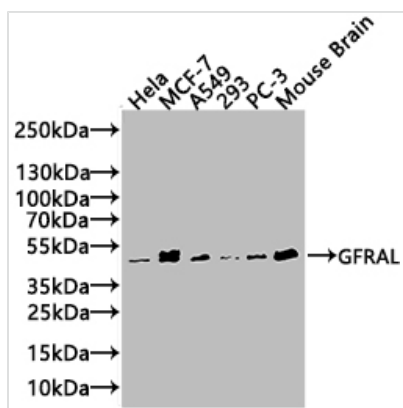




GFRAL Antibody

Product Code	CSB-PA751020LA01HU
Storage	Upon receipt, store at -20°C or -80°C. Avoid repeated freeze.
Uniprot No.	Q6UXV0
Immunogen	Recombinant Human GDNF family receptor alpha-like protein (19-351AA)
Raised In	Rabbit
Species Reactivity	Human,mouse
Tested Applications	WB, IF; Recommended dilution: WB:1:1000-1:2000, IF:1:20-1:100
Form	Liquid
Conjugate	Non-conjugated
Storage Buffer	Preservative: 0.03% Proclin 300 Constituents: 50% Glycerol, 0.01M PBS, PH 7.4
Purification Method	Affinity-purified
Isotype	IgG
Clonality	Polyclonal
Product Type	Polyclonal Antibody
Immunogen Species	Homo sapiens (Human)
Research Area	Cell Biology
Target Names	GFRAL

Image

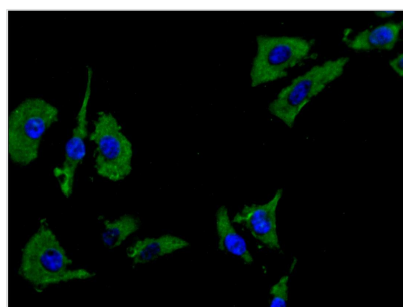


Western Blot

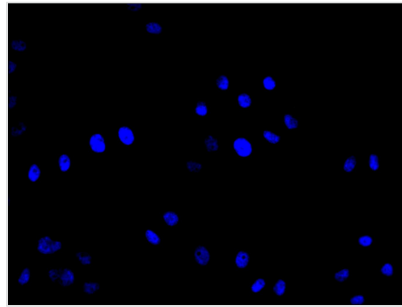
Positive WB detected in: HeLa whole cell lysate(20µg), MCF-7 whole cell lysate(20µg), A549 whole cell lysate(20µg), 293 whole cell lysate(20µg), PC-3 whole cell lysate(20µg) Mouse Brain tissue lysate(20µg)
All lanes: GFRAL antibody at 1:1000

Secondary

Goat polyclonal to rabbit IgG at 1/20000 dilution
Predicted band size: 45 kDa
Observed band size: 45 kDa
Exposure time: 30s



Immunofluorescence staining of HeLa cell with CSB-PA751020LA01HU at 1:30, counter-stained with DAPI. The cells were fixed in 4% formaldehyde and blocked in 10% normal Goat Serum. The cells were then incubated with the antibody overnight at 4C. The secondary antibody was Alexa Fluor 488-conjugated AffiniPure Goat Anti-Rabbit IgG(H+L).



Immunofluorescence staining of HeLa cell with 5% goat serum, counter-stained with DAPI. The cells were fixed in 4% formaldehyde and blocked in 10% normal Goat Serum. The cells were then incubated with the antibody overnight at 4C. The secondary antibody was Alexa Fluor 488-conjugated AffiniPure Goat Anti-Rabbit IgG(H+L).

Usage

For Research Use Only. Not for use in diagnostic or therapeutic procedures.