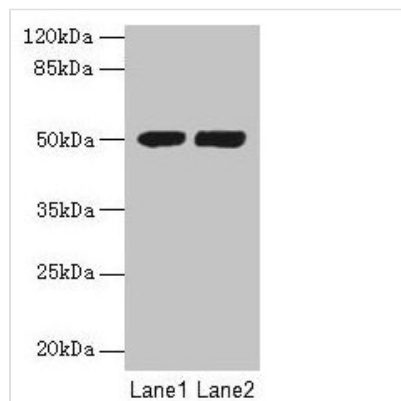




TUBA3E Antibody

Product Code	CSB-PA754255LA01HU
Storage	Upon receipt, store at -20°C or -80°C. Avoid repeated freeze.
Uniprot No.	Q6PEY2
Immunogen	Recombinant Human Tubulin alpha-3E chain protein (1-250AA)
Raised In	Rabbit
Species Reactivity	Human
Tested Applications	ELISA, WB, IHC; Recommended dilution: WB:1:1000-1:5000, IHC:1:20-1:200
Form	Liquid
Conjugate	Non-conjugated
Storage Buffer	Preservative: 0.03% Proclin 300 Constituents: 50% Glycerol, 0.01M PBS, PH 7.4
Purification Method	>95%, Protein G purified
Isotype	IgG
Clonality	Polyclonal
Alias	Tubulin alpha-3E chain (Alpha-tubulin 3E) [Cleaved into: Detyrosinated tubulin alpha-3E chain], TUBA3E
Immunogen Species	Homo sapiens (Human)
Research Area	Others
Target Names	TUBA3E

Image



Western blot

All lanes: TUBA3E antibody at 3µg/ml

Lane 1: MCF-7 whole cell lysate

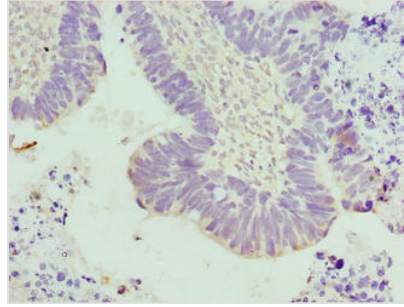
Lane 2: Hela whole cell lysate

Secondary

Goat polyclonal to rabbit IgG at 1/10000 dilution

Predicted band size: 50 kDa

Observed band size: 50 kDa



Immunohistochemistry of paraffin-embedded human ovarian cancer using CSB-PA754255LA01HU at dilution of 1:100

Usage

For Research Use Only. Not for use in diagnostic or therapeutic procedures.