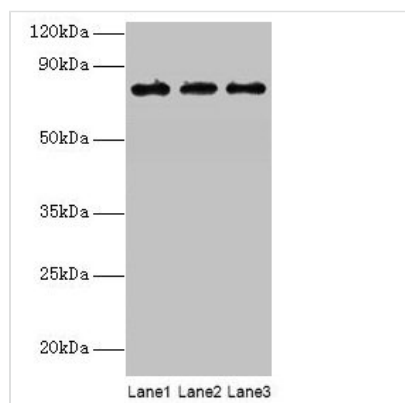




KIRREL2 Antibody

Product Code	CSB-PA754407LA01HU
Storage	Upon receipt, store at -20°C or -80°C. Avoid repeated freeze.
Uniprot No.	Q6UWL6
Immunogen	Recombinant Human Kin of IRRE-like protein 2 protein (21-219AA)
Raised In	Rabbit
Species Reactivity	Human, Mouse
Tested Applications	ELISA, WB; Recommended dilution: WB:1:1000-1:5000
Form	Liquid
Conjugate	Non-conjugated
Storage Buffer	Preservative: 0.03% Proclin 300 Constituents: 50% Glycerol, 0.01M PBS, PH 7.4
Purification Method	>95%, Protein G purified
Isotype	IgG
Clonality	Polyclonal
Alias	Kin of IRRE-like protein 2 (Kin of irregular chiasm-like protein 2) (Nephrin-like protein 3), KIRREL2, NEPH3
Immunogen Species	Homo sapiens (Human)
Research Area	Cell Biology
Target Names	KIRREL2

Image



Western blot

All lanes: KIRREL2 antibody at 8µg/ml

Lane 1: Mouse gonadal tissue

Lane 2: Mouse lung tissue

Lane 3: Mouse heart tissue

Secondary

Goat polyclonal to rabbit IgG at 1/10000 dilution

Predicted band size: 76, 68, 62, 24 kDa

Observed band size: 76 kDa

Usage

For Research Use Only. Not for use in diagnostic or therapeutic procedures.