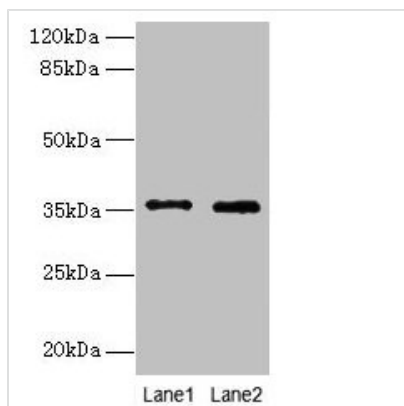




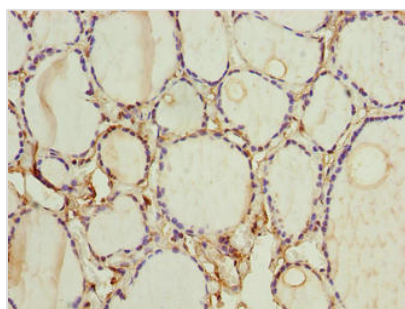
FOXR2 Antibody

Product Code	CSB-PA757660LA01HU
Storage	Upon receipt, store at -20°C or -80°C. Avoid repeated freeze.
Uniprot No.	Q6PJQ5
Immunogen	Recombinant Human Forkhead box protein R2 protein (1-300AA)
Raised In	Rabbit
Species Reactivity	Human
Tested Applications	ELISA, WB, IHC; Recommended dilution: WB:1:1000-1:5000, IHC:1:20-1:200
Form	Liquid
Conjugate	Non-conjugated
Storage Buffer	Preservative: 0.03% Proclin 300 Constituents: 50% Glycerol, 0.01M PBS, PH 7.4
Purification Method	>95%, Protein G purified
Isotype	IgG
Clonality	Polyclonal
Alias	Forkhead box protein R2 (Forkhead box protein N6), FOXR2, FOXN6
Immunogen Species	Homo sapiens (Human)
Research Area	Epigenetics and Nuclear Signaling
Target Names	FOXR2

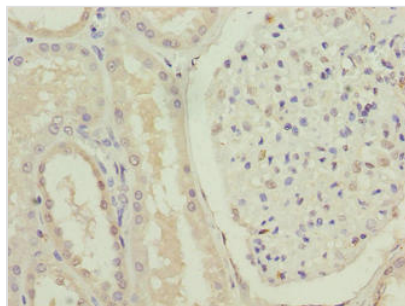
Image



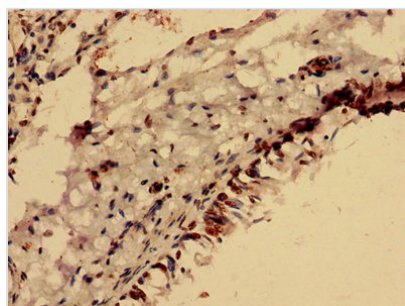
Western blot
 All lanes: FOXR2 antibody at 4µg/ml
 Lane 1: SH-SY5Y whole cell lysate
 Lane 2: Hela whole cell lysate
 Secondary
 Goat polyclonal to rabbit IgG at 1/10000 dilution
 Predicted band size: 36 kDa
 Observed band size: 36 kDa



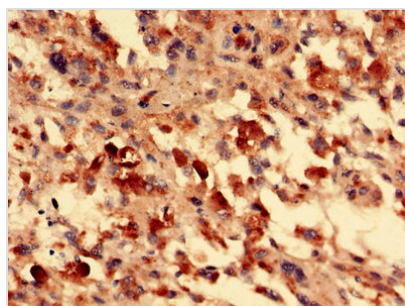
Immunohistochemistry of paraffin-embedded human thyroid tissue using CSB-PA757660LA01HU at dilution of 1:100



Immunohistochemistry of paraffin-embedded human kidney tissue using CSB-PA757660LA01HU at dilution of 1:100



Immunohistochemistry analysis of human lung cancer using CSB-PA757660LA01HU at dilution of 1:100



Immunohistochemistry analysis of human melanoma using CSB-PA757660LA01HU at dilution of 1:100

Usage

For Research Use Only. Not for use in diagnostic or therapeutic procedures.