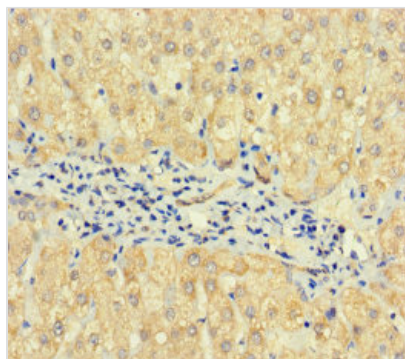




TPTE2 Antibody

| | |
|----------------------------|--|
| Product Code | CSB-PA757850LA01HU |
| Storage | Upon receipt, store at -20°C or -80°C. Avoid repeated freeze. |
| Uniprot No. | Q6XPS3 |
| Immunogen | Recombinant Human Phosphatidylinositol 3,4,5-trisphosphate 3-phosphatase TPTE2 protein (167-411AA) |
| Raised In | Rabbit |
| Species Reactivity | Human |
| Tested Applications | ELISA, IHC; Recommended dilution: IHC:1:20-1:200 |
| Form | Liquid |
| Conjugate | Non-conjugated |
| Storage Buffer | Preservative: 0.03% Proclin 300 Constituents: 50% Glycerol, 0.01M PBS, PH 7.4 |
| Purification Method | >95%, Protein G purified |
| Isotype | IgG |
| Clonality | Polyclonal |
| Alias | Phosphatidylinositol 3,4,5-trisphosphate 3-phosphatase TPTE2 (EC 3.1.3.67) (Lipid phosphatase TPIP) (TPTE and PTEN homologous inositol lipid phosphatase), TPTE2, TPIP |
| Immunogen Species | Homo sapiens (Human) |
| Research Area | Signal Transduction |
| Target Names | TPTE2 |

Image



Immunohistochemistry of paraffin-embedded human liver cancer using CSB-PA757850LA01HU at dilution of 1:100

Usage

For Research Use Only. Not for use in diagnostic or therapeutic procedures.