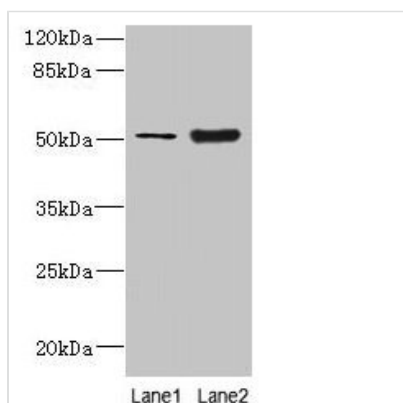




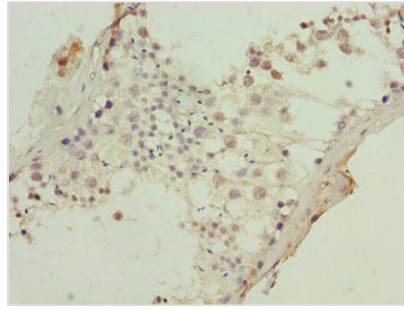
KRT80 Antibody

Product Code	CSB-PA760849LA01HU
Storage	Upon receipt, store at -20°C or -80°C. Avoid repeated freeze.
Uniprot No.	Q6KB66
Immunogen	Recombinant Human Keratin, type II cytoskeletal 80 protein (1-300AA)
Raised In	Rabbit
Species Reactivity	Human, Mouse
Tested Applications	ELISA, WB, IHC; Recommended dilution: WB:1:1000-1:5000, IHC:1:20-1:200
Form	Liquid
Conjugate	Non-conjugated
Storage Buffer	Preservative: 0.03% Proclin 300 Constituents: 50% Glycerol, 0.01M PBS, PH 7.4
Purification Method	>95%, Protein G purified
Isotype	IgG
Clonality	Polyclonal
Alias	Keratin, type II cytoskeletal 80 (Cytokeratin-80) (CK-80) (Keratin-80) (K80) (Type-II keratin Kb20), KRT80, KB20
Immunogen Species	Homo sapiens (Human)
Research Area	Signal Transduction
Target Names	KRT80

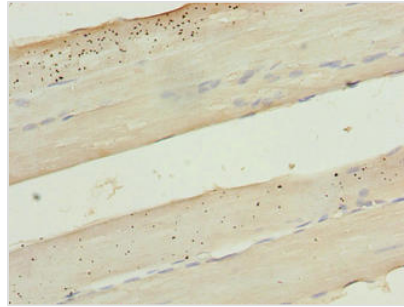
Image



Western blot
 All lanes: KRT80 antibody at 2µg/ml
 Lane 1: A549 whole cell lysate
 Lane 2: Mouse brain tissue
 Secondary
 Goat polyclonal to rabbit IgG at 1/10000 dilution
 Predicted band size: 51, 48, 55 kDa
 Observed band size: 51 kDa



Immunohistochemistry of paraffin-embedded human testis tissue using CSB-PA760849LA01HU at dilution of 1:100



Immunohistochemistry of paraffin-embedded human skeletal muscle tissue using CSB-PA760849LA01HU at dilution of 1:100

Usage

For Research Use Only. Not for use in diagnostic or therapeutic procedures.