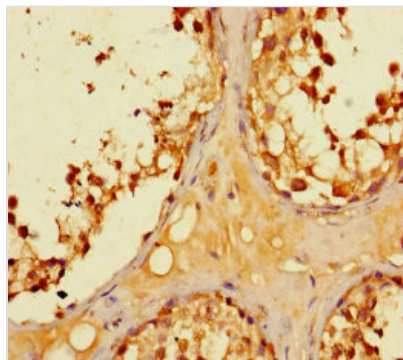




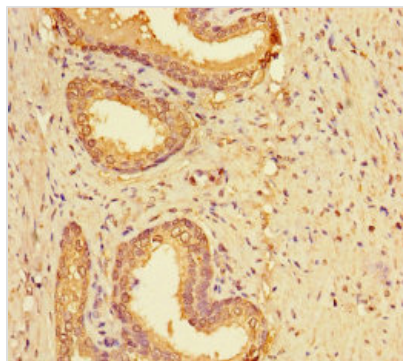
LYPD2 Antibody

Product Code	CSB-PA761498LA01HU
Storage	Upon receipt, store at -20°C or -80°C. Avoid repeated freeze.
Uniprot No.	Q6UXB3
Immunogen	Recombinant Human Ly6/PLAUR domain-containing protein 2 protein (23-103AA)
Raised In	Rabbit
Species Reactivity	Human
Tested Applications	ELISA, IHC; Recommended dilution: IHC:1:20-1:200
Form	Liquid
Conjugate	Non-conjugated
Storage Buffer	Preservative: 0.03% Proclin 300 Constituents: 50% Glycerol, 0.01M PBS, PH 7.4
Purification Method	>95%, Protein G purified
Isotype	IgG
Clonality	Polyclonal
Alias	Ly6/PLAUR domain-containing protein 2, LYPD2, LYPDC2
Immunogen Species	Homo sapiens (Human)
Research Area	Cell Biology
Target Names	LYPD2

Image



Immunohistochemistry of paraffin-embedded human testis tissue using CSB-PA761498LA01HU at dilution of 1:100



Immunohistochemistry of paraffin-embedded human prostate cancer using CSB-PA761498LA01HU at dilution of 1:100