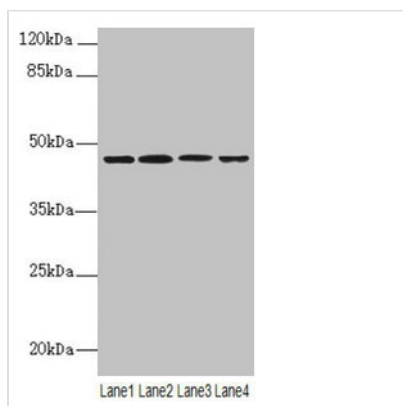




NAPEPLD Antibody

Product Code	CSB-PA764247LA01HU
Storage	Upon receipt, store at -20°C or -80°C. Avoid repeated freeze.
Uniprot No.	Q6IQ20
Immunogen	Recombinant Human N-acyl-phosphatidylethanolamine-hydrolyzing phospholipase D protein (1-200AA)
Raised In	Rabbit
Species Reactivity	Human, Mouse
Tested Applications	ELISA, WB; Recommended dilution: WB:1:1000-1:5000
Form	Liquid
Conjugate	Non-conjugated
Storage Buffer	Preservative: 0.03% Proclin 300 Constituents: 50% Glycerol, 0.01M PBS, PH 7.4
Purification Method	>95%, Protein G purified
Isotype	IgG
Clonality	Polyclonal
Alias	N-acyl-phosphatidylethanolamine-hydrolyzing phospholipase D (N-acyl phosphatidylethanolamine phospholipase D) (NAPE-PLD) (NAPE-hydrolyzing phospholipase D) (EC 3.1.4.54), NAPEPLD, C7orf18
Immunogen Species	Homo sapiens (Human)
Research Area	Signal Transduction
Target Names	NAPEPLD

Image



Western blot

All lanes: NAPEPLD antibody at 6µg/ml

Lane 1: Mouse large intestine tissue

Lane 2: Mouse kidney tissue

Lane 3: Mouse stomach tissue

Lane 4: MCF-7 whole cell lysate

Secondary

Goat polyclonal to rabbit IgG at 1/10000 dilution

Predicted band size: 46 kDa

Observed band size: 46 kDa

Usage

For Research Use Only. Not for use in diagnostic or therapeutic procedures.