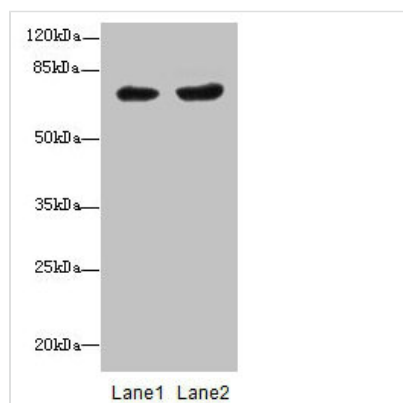




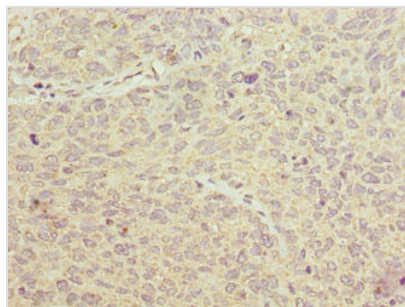
PGM2L1 Antibody

| | |
|----------------------------|---|
| Product Code | CSB-PA764776LA01HU |
| Storage | Upon receipt, store at -20°C or -80°C. Avoid repeated freeze. |
| Uniprot No. | Q6PCE3 |
| Immunogen | Recombinant Human Glucose 1,6-bisphosphate synthase protein (101-400AA) |
| Raised In | Rabbit |
| Species Reactivity | Human |
| Tested Applications | ELISA, WB, IHC; Recommended dilution: WB:1:1000-1:5000, IHC:1:20-1:200 |
| Form | Liquid |
| Conjugate | Non-conjugated |
| Storage Buffer | Preservative: 0.03% Proclin 300 Constituents: 50% Glycerol, 0.01M PBS, PH 7.4 |
| Purification Method | Antigen Affinity Purified |
| Isotype | IgG |
| Clonality | Polyclonal |
| Alias | Glucose 1,6-bisphosphate synthase (EC 2.7.1.106) (PMMLP) (Phosphoglucosmutase-2-like 1), PGM2L1, BM32A |
| Immunogen Species | Homo sapiens (Human) |
| Research Area | Others |
| Target Names | PGM2L1 |

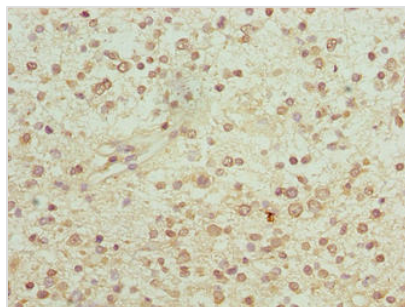
Image



Western blot
All lanes: PGM2L1 antibody at 0.8µg/ml
Lane 1: HL60 whole cell lysate
Lane 2: MCF-7 whole cell lysate
Secondary
Goat polyclonal to rabbit IgG at 1/10000 dilution
Predicted band size: 71 kDa
Observed band size: 71 kDa



Immunohistochemistry of paraffin-embedded human cervical cancer using CSB-PA764776LA01HU at dilution of 1:100



Immunohistochemistry of paraffin-embedded human glioma using CSB-PA764776LA01HU at dilution of 1:100