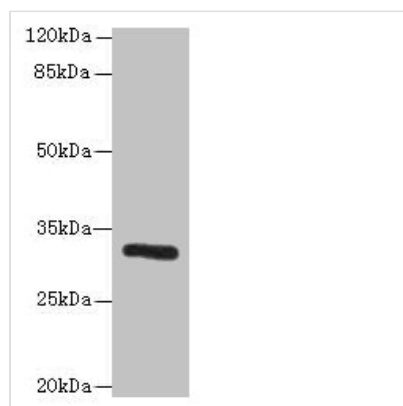




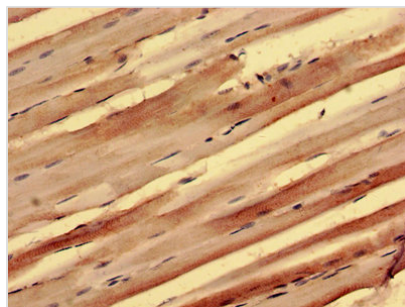
# PPP1R3B Antibody

<b>Product Code</b>	CSB-PA769802LA01HU
<b>Storage</b>	Upon receipt, store at -20°C or -80°C. Avoid repeated freeze.
<b>Uniprot No.</b>	Q86XI6
<b>Immunogen</b>	Recombinant Human Protein phosphatase 1 regulatory subunit 3B protein (1-285AA)
<b>Raised In</b>	Rabbit
<b>Species Reactivity</b>	Human, Mouse, Rat
<b>Tested Applications</b>	ELISA, WB, IHC; Recommended dilution: WB:1:500-1:5000, IHC:1:20-1:200
<b>Form</b>	Liquid
<b>Conjugate</b>	Non-conjugated
<b>Storage Buffer</b>	Preservative: 0.03% Proclin 300 Constituents: 50% Glycerol, 0.01M PBS, PH 7.4
<b>Purification Method</b>	>95%, Protein G purified
<b>Isotype</b>	IgG
<b>Clonality</b>	Polyclonal
<b>Alias</b>	Protein phosphatase 1 regulatory subunit 3B (Hepatic glycogen-targeting protein phosphatase 1 regulatory subunit GL) (Protein phosphatase 1 regulatory subunit 4) (PP1 subunit R4) (Protein phosphatase 1 subunit GL) (PTG), PPP1R3B, PPP1R4
<b>Immunogen Species</b>	Homo sapiens (Human)
<b>Research Area</b>	Signal Transduction
<b>Target Names</b>	PPP1R3B

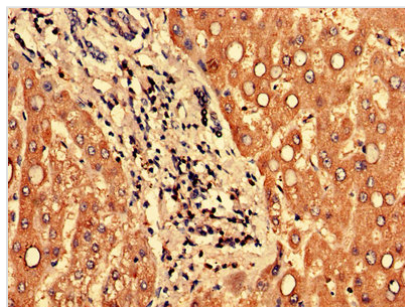
## Image



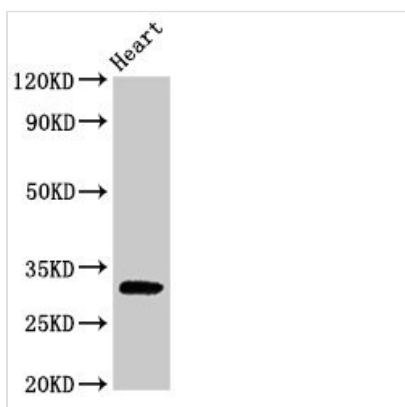
Western blot  
 All lanes: PPP1R3B antibody at 6µg/ml + Mouse liver tissue  
 Secondary  
 Goat polyclonal to rabbit IgG at 1/10000 dilution  
 Predicted band size: 33 kDa  
 Observed band size: 33 kDa



Immunohistochemistry of paraffin-embedded human skeletal muscle tissue using CSB-PA769802LA01HU at dilution of 1:100



Immunohistochemistry of paraffin-embedded human liver tissue using CSB-PA769802LA01HU at dilution of 1:100



#### Western Blot

Positive WB detected in: Rat heart tissue

All lanes: PPP1R3B antibody at 2.5µg/ml

Secondary

Goat polyclonal to rabbit IgG at 1/50000 dilution

Predicted band size: 33 kDa

Observed band size: 33 kDa

#### Usage

For Research Use Only. Not for use in diagnostic or therapeutic procedures.