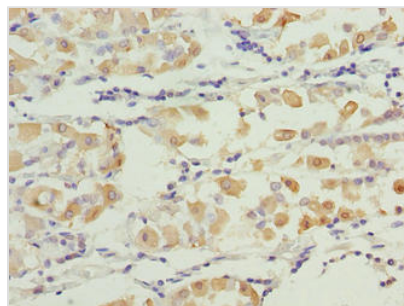




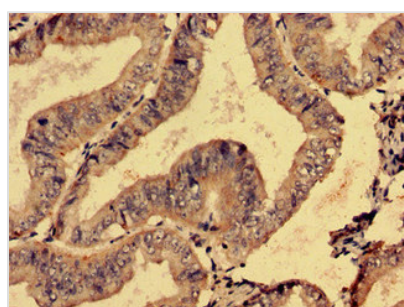
SMG6 Antibody

Product Code	CSB-PA773032LA01HU
Storage	Upon receipt, store at -20°C or -80°C. Avoid repeated freeze.
Uniprot No.	Q86US8
Immunogen	Recombinant Human Telomerase-binding protein EST1A protein (251-511AA)
Raised In	Rabbit
Species Reactivity	Human
Tested Applications	ELISA, IHC, IF; Recommended dilution: IHC:1:20-1:200, IF:1:50-1:200
Form	Liquid
Conjugate	Non-conjugated
Storage Buffer	Preservative: 0.03% Proclin 300 Constituents: 50% Glycerol, 0.01M PBS, PH 7.4
Purification Method	>95%, Protein G purified
Isotype	IgG
Clonality	Polyclonal
Alias	Telomerase-binding protein EST1A (EC 3.1.-.-) (EST1-like protein A) (Ever shorter telomeres 1A) (Smg-6 homolog) (Telomerase subunit EST1A) (hSmg5/7a), SMG6, C17orf31 EST1A KIAA0732
Immunogen Species	Homo sapiens (Human)
Research Area	Cancer
Target Names	SMG6

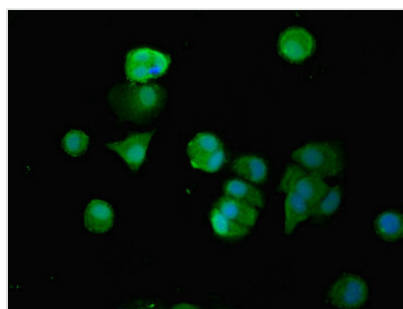
Image



Immunohistochemistry of paraffin-embedded human gastric cancer using CSB-PA773032LA01HU at dilution of 1:100



Immunohistochemistry analysis of human endometrial cancer using CSB-PA773032LA01HU at dilution of 1:100



Immunofluorescent analysis of MCF-7 cells using CSB-PA773032LA01HU at dilution of 1:100 and Alexa Fluor 488-conjugated AffiniPure Goat Anti-Rabbit IgG(H+L)

Usage

For Research Use Only. Not for use in diagnostic or therapeutic procedures.