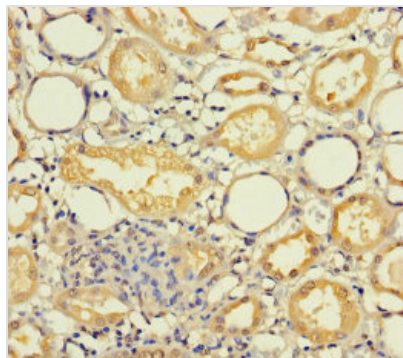




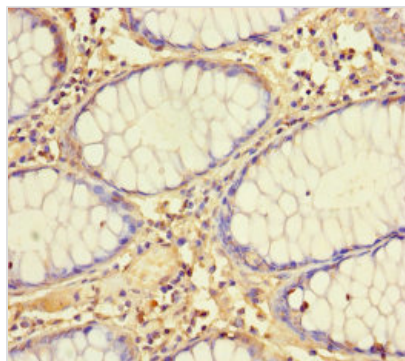
MRPL21 Antibody

Product Code	CSB-PA773581LA01HU
Storage	Upon receipt, store at -20°C or -80°C. Avoid repeated freeze.
Uniprot No.	Q7Z2W9
Immunogen	Recombinant Human 39S ribosomal protein L21, mitochondrial protein (40-205AA)
Raised In	Rabbit
Species Reactivity	Human
Tested Applications	ELISA, IHC; Recommended dilution: IHC:1:20-1:200
Form	Liquid
Conjugate	Non-conjugated
Storage Buffer	Preservative: 0.03% Proclin 300 Constituents: 50% Glycerol, 0.01M PBS, PH 7.4
Purification Method	>95%, Protein G purified
Isotype	IgG
Clonality	Polyclonal
Alias	39S ribosomal protein L21, mitochondrial (L21mt) (MRP-L21) (Mitochondrial large ribosomal subunit protein bL21m), MRPL21
Immunogen Species	Homo sapiens (Human)
Research Area	Tags & Cell Markers
Target Names	MRPL21

Image



Immunohistochemistry of paraffin-embedded human kidney tissue using CSB-PA773581LA01HU at dilution of 1:100



Immunohistochemistry of paraffin-embedded human colon cancer using CSB-PA773581LA01HU at dilution of 1:100