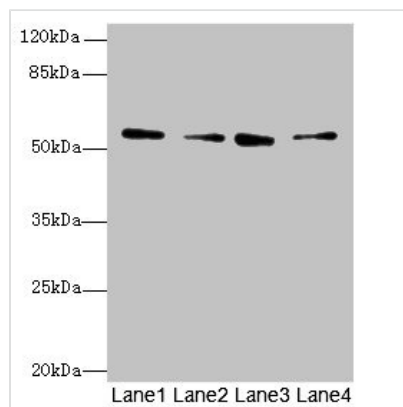




ERO1B Antibody

Product Code	CSB-PA774834LA01HU
Storage	Upon receipt, store at -20°C or -80°C. Avoid repeated freeze.
Uniprot No.	Q86YB8
Immunogen	Recombinant Human ERO1-like protein beta protein (101-400AA)
Raised In	Rabbit
Species Reactivity	Human, Mouse
Tested Applications	ELISA, WB, IHC; Recommended dilution: WB:1:1000-1:5000, IHC:1:20-1:200
Form	Liquid
Conjugate	Non-conjugated
Storage Buffer	Preservative: 0.03% Proclin 300 Constituents: 50% Glycerol, 0.01M PBS, PH 7.4
Purification Method	>95%, Protein G purified
Isotype	IgG
Clonality	Polyclonal
Alias	ERO1-like protein beta (ERO1-L-beta) (EC 1.8.4.-) (Endoplasmic reticulum oxidoreductase beta) (Endoplasmic reticulum oxidoreductin-1-like protein B) (Oxidoreductin-1-L-beta), ERO1B, ERO1LB
Immunogen Species	Homo sapiens (Human)
Research Area	Signal Transduction
Target Names	ERO1B

Image



Western blot

All lanes: ERO1B antibody at 3.2µg/ml

Lane 1: MCF-7 whole cell lysate

Lane 2: U251 whole cell lysate

Lane 3: Mouse liver tissue

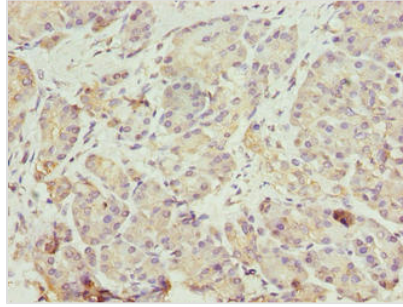
Lane 4: U87 whole cell lysate

Secondary

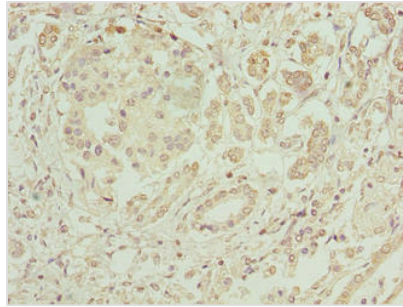
Goat polyclonal to rabbit IgG at 1/10000 dilution

Predicted band size: 54, 17 kDa

Observed band size: 54 kDa



Immunohistochemistry of paraffin-embedded human pancreatic tissue using CSB-PA774834LA01HU at dilution of 1:100



Immunohistochemistry of paraffin-embedded human pancreatic cancer using CSB-PA774834LA01HU at dilution of 1:100

Usage

For Research Use Only. Not for use in diagnostic or therapeutic procedures.