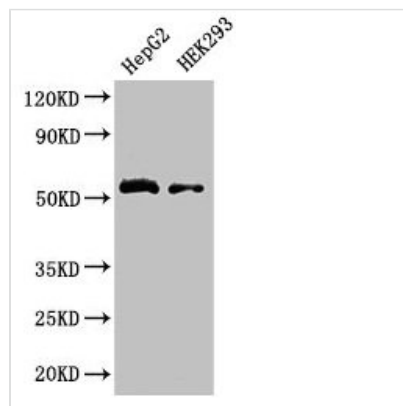




# LDHD Antibody

<b>Product Code</b>	CSB-PA801250LA01HU
<b>Storage</b>	Upon receipt, store at -20°C or -80°C. Avoid repeated freeze.
<b>Uniprot No.</b>	Q86WU2
<b>Immunogen</b>	Recombinant Human Probable D-lactate dehydrogenase, mitochondrial protein (310-507AA)
<b>Raised In</b>	Rabbit
<b>Species Reactivity</b>	Human
<b>Tested Applications</b>	ELISA, WB, IHC, IF; Recommended dilution: WB:1:500-1:5000, IHC:1:20-1:200, IF:1:50-1:200
<b>Form</b>	Liquid
<b>Conjugate</b>	Non-conjugated
<b>Storage Buffer</b>	Preservative: 0.03% Proclin 300 Constituents: 50% Glycerol, 0.01M PBS, PH 7.4
<b>Purification Method</b>	>95%, Protein G purified
<b>Isotype</b>	IgG
<b>Clonality</b>	Polyclonal
<b>Alias</b>	Probable D-lactate dehydrogenase, mitochondrial (DLD) (Lactate dehydrogenase D) (EC 1.1.2.4), LDHD
<b>Immunogen Species</b>	Homo sapiens (Human)
<b>Research Area</b>	Signal Transduction
<b>Target Names</b>	LDHD

## Image



### Western Blot

Positive WB detected in: HepG2 whole cell lysate, HEK293 whole cell lysate

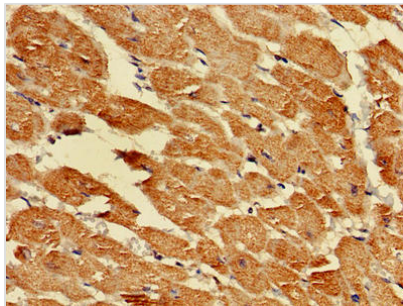
All lanes: LDHD antibody at 3.2µg/ml

Secondary

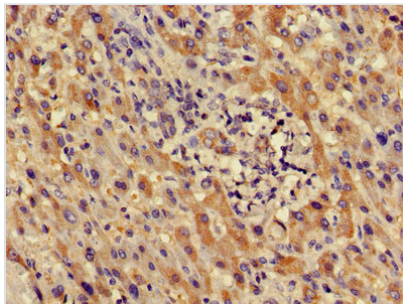
Goat polyclonal to rabbit IgG at 1/50000 dilution

Predicted band size: 55, 53 kDa

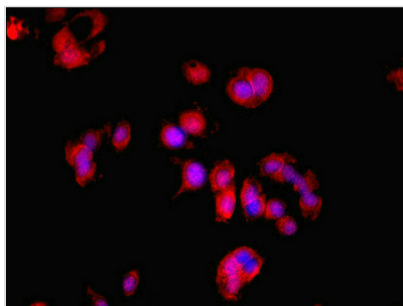
Observed band size: 55 kDa



Immunohistochemistry of paraffin-embedded human heart tissue using CSB-PA801250LA01HU at dilution of 1:100



Immunohistochemistry of paraffin-embedded human liver cancer using CSB-PA801250LA01HU at dilution of 1:100



Immunofluorescent analysis of MCF-7 cells using CSB-PA801250LA01HU at dilution of 1:100 and Cy3-conjugated Goat Anti-Rabbit IgG