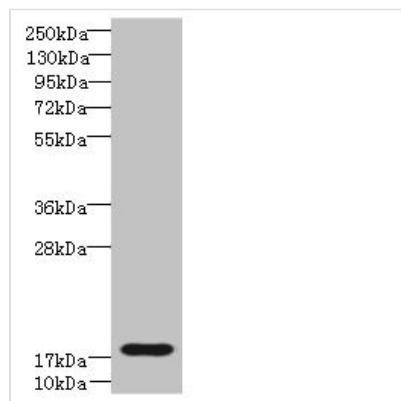




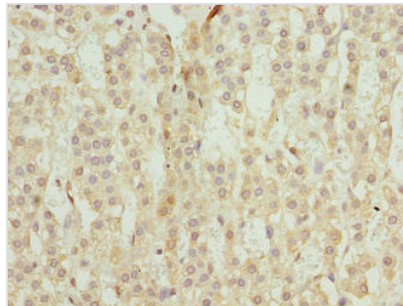
# TRAPPC6B Antibody

|                            |   |
|----------------------------|---|
| <b>Product Code</b>        | CSB-PA803112LA01HU  |
| <b>Storage</b>             | Upon receipt, store at -20°C or -80°C. Avoid repeated freeze.                       |
| <b>Uniprot No.</b>         | Q86SZ2  |
| <b>Immunogen</b>           | Recombinant Human Trafficking protein particle complex subunit 6B protein (1-130AA) |
| <b>Raised In</b>           | Rabbit  |
| <b>Species Reactivity</b>  | Human, Mouse  |
| <b>Tested Applications</b> | ELISA, WB, IHC; Recommended dilution: WB:1:1000-1:5000, IHC:1:20-1:200              |
| <b>Form</b>                | Liquid  |
| <b>Conjugate</b>           | Non-conjugated  |
| <b>Storage Buffer</b>      | Preservative: 0.03% Proclin 300<br>Constituents: 50% Glycerol, 0.01M PBS, PH 7.4    |
| <b>Purification Method</b> | >95%, Protein G purified  |
| <b>Isotype</b>             | IgG   |
| <b>Clonality</b>           | Polyclonal  |
| <b>Alias</b>               | Trafficking protein particle complex subunit 6B, TRAPPC6B                           |
| <b>Immunogen Species</b>   | Homo sapiens (Human)  |
| <b>Research Area</b>       | Signal Transduction   |
| <b>Target Names</b>        | TRAPPC6B  |

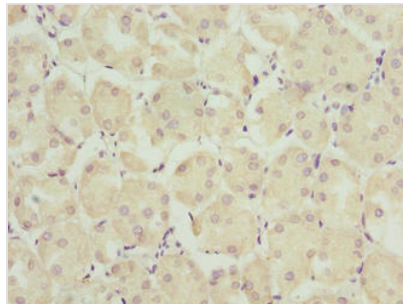
## Image



Western blot  
All lanes: TRAPPC6B antibody at 4µg/ml +  
Mouse kidney tissue  
Secondary  
Goat polyclonal to rabbit IgG at 1/10000 dilution  
Predicted band size: 18, 15 kDa  
Observed band size: 18 kDa



Immunohistochemistry of paraffin-embedded human adrenal gland tissue using CSB-PA803112LA01HU at dilution of 1:100



Immunohistochemistry of paraffin-embedded human pancreatic tissue using CSB-PA803112LA01HU at dilution of 1:100