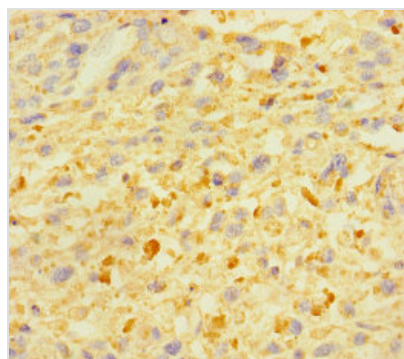




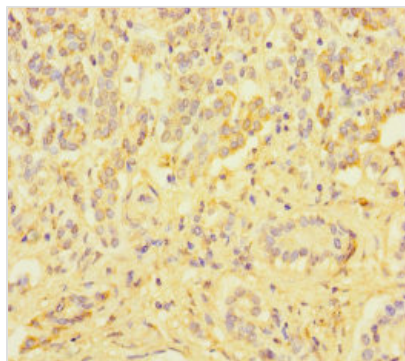
# ZSCAN29 Antibody

|                            |  |
|----------------------------|--|
| <b>Product Code</b>        | CSB-PA809002LA01HU   |
| <b>Storage</b>             | Upon receipt, store at -20°C or -80°C. Avoid repeated freeze.                                |
| <b>Uniprot No.</b>         | Q8IWIY8  |
| <b>Immunogen</b>           | Recombinant Human Zinc finger and SCAN domain-containing protein 29 protein (1-300AA)        |
| <b>Raised In</b>           | Rabbit   |
| <b>Species Reactivity</b>  | Human  |
| <b>Tested Applications</b> | ELISA, IHC; Recommended dilution: IHC:1:20-1:200   |
| <b>Form</b>                | Liquid   |
| <b>Conjugate</b>           | Non-conjugated   |
| <b>Storage Buffer</b>      | Preservative: 0.03% Proclin 300<br>Constituents: 50% Glycerol, 0.01M PBS, PH 7.4             |
| <b>Purification Method</b> | >95%, Protein G purified   |
| <b>Isotype</b>             | IgG  |
| <b>Clonality</b>           | Polyclonal   |
| <b>Alias</b>               | Zinc finger and SCAN domain-containing protein 29 (Zinc finger protein 690), ZSCAN29, ZNF690 |
| <b>Immunogen Species</b>   | Homo sapiens (Human)   |
| <b>Research Area</b>       | Epigenetics and Nuclear Signaling  |
| <b>Target Names</b>        | ZSCAN29  |

## Image



Immunohistochemistry of paraffin-embedded human melanoma using CSB-PA809002LA01HU at dilution of 1:100



Immunohistochemistry of paraffin-embedded human pancreatic cancer using CSB-PA809002LA01HU at dilution of 1:100

---

**Usage**

For Research Use Only. Not for use in diagnostic or therapeutic procedures.