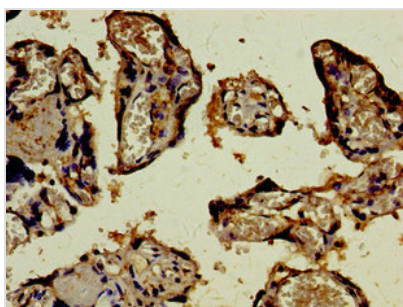




SCYL3 Antibody

Product Code	CSB-PA809026LA01HU
Storage	Upon receipt, store at -20°C or -80°C. Avoid repeated freeze.
Uniprot No.	Q8IZE3
Immunogen	Recombinant Human Protein-associating with the carboxyl-terminal domain of ezrin protein (1-688AA)
Raised In	Rabbit
Species Reactivity	Human
Tested Applications	ELISA, IHC; Recommended dilution: IHC:1:20-1:200
Form	Liquid
Conjugate	Non-conjugated
Storage Buffer	Preservative: 0.03% Proclin 300 Constituents: 50% Glycerol, 0.01M PBS, PH 7.4
Purification Method	>95%, Protein G purified
Isotype	IgG
Clonality	Polyclonal
Alias	Protein-associating with the carboxyl-terminal domain of ezrin (Ezrin-binding protein PACE-1) (SCY1-like protein 3), SCYL3, PACE1
Immunogen Species	Homo sapiens (Human)
Research Area	Cell Biology
Target Names	SCYL3

Image



Immunohistochemistry of paraffin-embedded human placenta tissue using CSB-PA809026LA01HU at dilution of 1:100

Usage

For Research Use Only. Not for use in diagnostic or therapeutic procedures.