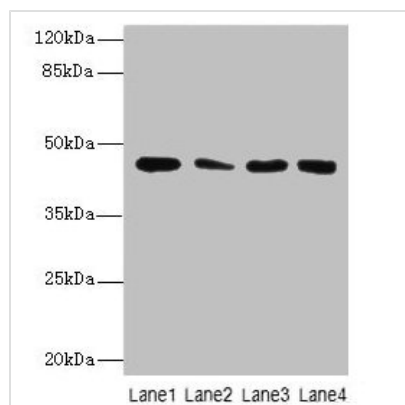




CBWD2 Antibody

Product Code	CSB-PA814202LA01HU
Storage	Upon receipt, store at -20°C or -80°C. Avoid repeated freeze.
Uniprot No.	Q8IUF1
Immunogen	Recombinant Human COBW domain-containing protein 2 protein (96-395AA)
Raised In	Rabbit
Species Reactivity	Human, Mouse
Tested Applications	ELISA, WB, IHC, IF; Recommended dilution: WB:1:1000-1:5000, IHC:1:20-1:200, IF:1:50-1:200
Form	Liquid
Conjugate	Non-conjugated
Storage Buffer	Preservative: 0.03% Proclin 300 Constituents: 50% Glycerol, 0.01M PBS, PH 7.4
Purification Method	>95%, Protein G purified
Isotype	IgG
Clonality	Polyclonal
Alias	COBW domain-containing protein 2 (Cobalamin synthase W domain-containing protein 2), CBWD2
Immunogen Species	Homo sapiens (Human)
Research Area	Cell Biology
Target Names	CBWD2

Image



Western Blot

All lanes: CBWD2 antibody at 6µg/ml

Lane 1: Mouse heart tissue

Lane 2: Mouse liver tissue

Lane 3: Mouse lung tissue

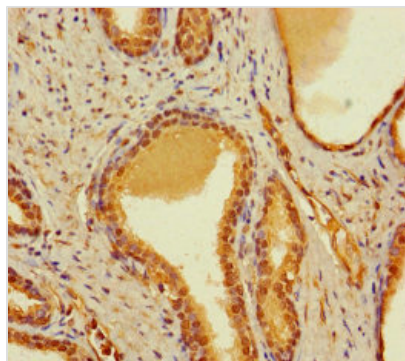
Lane 4: Hela whole cell lysate

Secondary

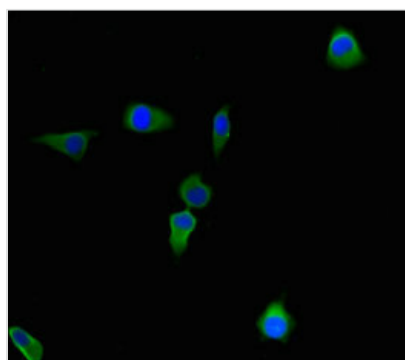
Goat polyclonal to rabbit IgG at 1/10000 dilution

Predicted band size: 45 kDa

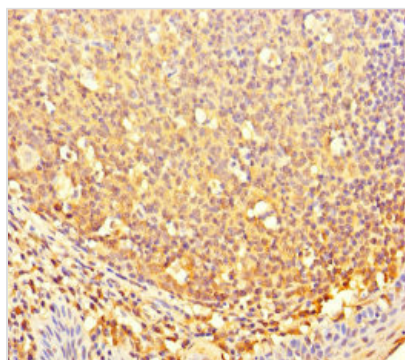
Observed band size: 45 kDa



Immunohistochemistry of paraffin-embedded human prostate cancer using CSB-PA814202LA01HU at dilution of 1:100



Immunofluorescent analysis of HeLa cells using CSB-PA814202LA01HU at dilution of 1:100 and Alexa Fluor 488-conjugated AffiniPure Goat Anti-Rabbit IgG(H+L)



Immunohistochemistry of paraffin-embedded human tonsil tissue using CSB-PA814202LA01HU at dilution of 1:100

Usage

For Research Use Only. Not for use in diagnostic or therapeutic procedures.