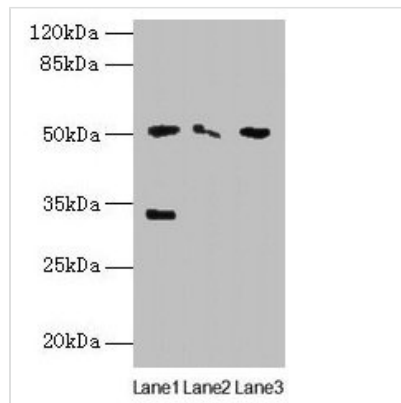




SLC38A6 Antibody

Product Code	CSB-PA818274LA01HU
Storage	Upon receipt, store at -20°C or -80°C. Avoid repeated freeze.
Uniprot No.	Q8IZM9
Immunogen	Recombinant Human Probable sodium-coupled neutral amino acid transporter 6 protein (132-169AA)
Raised In	Rabbit
Species Reactivity	Human, Mouse
Tested Applications	ELISA, WB, IF; Recommended dilution: WB:1:1000-1:5000, IF:1:50-1:200
Form	Liquid
Conjugate	Non-conjugated
Storage Buffer	Preservative: 0.03% Proclin 300 Constituents: 50% Glycerol, 0.01M PBS, PH 7.4
Purification Method	>95%, Protein G purified
Isotype	IgG
Clonality	Polyclonal
Alias	Probable sodium-coupled neutral amino acid transporter 6 (N-system amino acid transporter 1) (NAT-1) (Na(+)-coupled neutral amino acid transporter 6) (Solute carrier family 38 member 6), SLC38A6, NAT1 SNAT6
Immunogen Species	Homo sapiens (Human)
Research Area	Signal Transduction
Target Names	SLC38A6

Image



Western blot

All lanes: SLC38A6 antibody at 12µg/ml

Lane 1: Mouse kidney tissue

Lane 2: Mouse thymus tissue

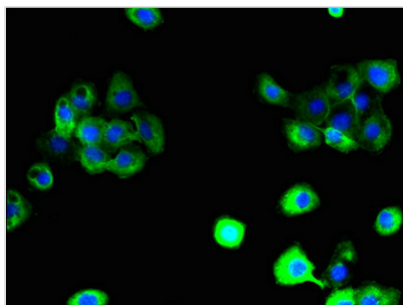
Lane 3: U87 whole cell lysate

Secondary

Goat polyclonal to rabbit IgG at 1/10000 dilution

Predicted band size: 51, 58 kDa

Observed band size: 51, 33 kDa



Immunofluorescent analysis of A431 cells using CSB-PA818274LA01HU at dilution of 1:100 and Alexa Fluor 488-conjugated AffiniPure Goat Anti-Rabbit IgG(H+L)

Usage

For Research Use Only. Not for use in diagnostic or therapeutic procedures.