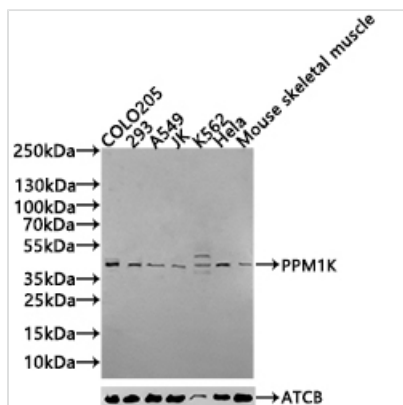




# PPM1K Antibody

<b>Product Code</b>	CSB-PA822697LA01HU
<b>Storage</b>	Upon receipt, store at -20°C or -80°C. Avoid repeated freeze.
<b>Uniprot No.</b>	Q8N3J5
<b>Immunogen</b>	Recombinant Human Protein phosphatase 1K, mitochondrial protein (30-372AA)
<b>Raised In</b>	Rabbit
<b>Species Reactivity</b>	Human, Mouse
<b>Tested Applications</b>	ELISA, WB, IHC; Recommended dilution: WB:1:500-1:2000, IHC:1:100-1:200
<b>Form</b>	Liquid
<b>Storage Buffer</b>	Preservative: 0.02% sodium azide Constituents: 50% Glycerol, 0.01M PBS, pH 7.4
<b>Purification Method</b>	Antigen affinity purification
<b>Isotype</b>	IgG
<b>Clonality</b>	Polyclonal
<b>Product Type</b>	Polyclonal Antibody
<b>Immunogen Species</b>	Homo sapiens (Human)
<b>Research Area</b>	Tags & Cell Markers
<b>Target Names</b>	PPM1K

## Image



### Western Blot

Positive WB detected in: COLO205 whole cell lysate(30µg), 293 whole cell lysate(30µg), A549 whole cell lysate(30µg), JK whole cell lysate(30µg), K562 whole cell lysate(30µg), HeLa whole cell lysate(30µg), Mouse skeletal muscle tissue lysate(30µg)

All lanes: PPM1K antibody at 1:1000

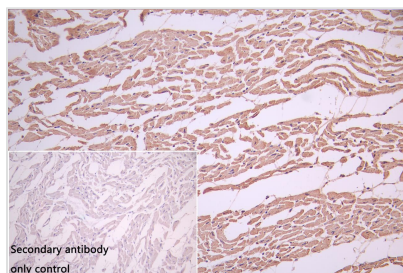
### Secondary

Goat polyclonal to rabbit IgG at 1/20000 dilution

Predicted band size: 41,26,17 kDa

Observed band size: 41 kDa

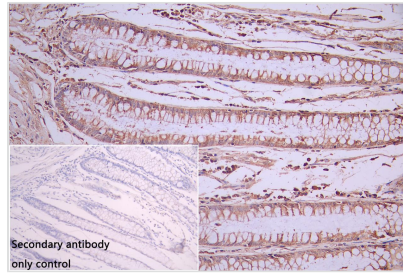
Exposure time: 120s



IHC image of CSB-PA822697LA01HU diluted at 1:100 and staining in paraffin-embedded human heart tissue performed on a Leica Bond™ system. After dewaxing and hydration, antigen retrieval was mediated by high pressure in a citrate buffer (pH 6.0). Section was blocked with 10% normal goat serum 30min at RT. Then primary antibody (1% BSA) was incubated at 4°C overnight. The primary is detected by a Goat anti-rabbit polymer IgG labeled by HRP and visualized using 0.05% DAB. Secondary



antibody only control: uses 1% BSA instead of primary antibody



IHC image of CSB-PA822697LA01HU diluted at 1:100 and staining in paraffin-embedded human colorectal cancer performed on a Leica Bond™ system. After dewaxing and hydration, antigen retrieval was mediated by high pressure in a citrate buffer (pH 6.0). Section was blocked with 10% normal goat serum 30min at RT. Then primary antibody (1% BSA) was incubated at 4°C overnight. The primary is detected by a Goat anti-rabbit polymer IgG labeled by HRP and visualized using 0.05% DAB. Secondary antibody only control: uses 1% BSA instead of primary antibody

## Usage

For Research Use Only. Not for use in diagnostic or therapeutic procedures.