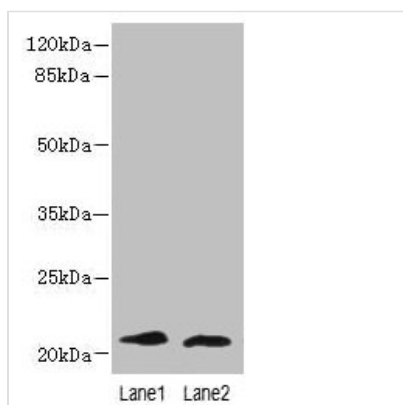




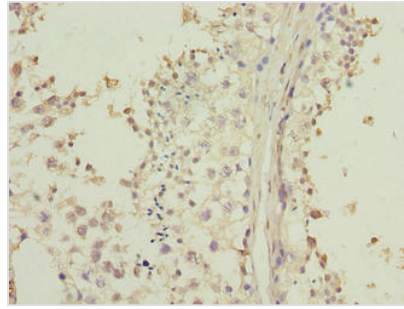
LRRC20 Antibody

Product Code	CSB-PA823454LA01HU
Storage	Upon receipt, store at -20°C or -80°C. Avoid repeated freeze.
Uniprot No.	Q8TCA0
Immunogen	Recombinant Human Leucine-rich repeat-containing protein 20 protein (1-184AA)
Raised In	Rabbit
Species Reactivity	Human, Mouse
Tested Applications	ELISA, WB, IHC; Recommended dilution: WB:1:1000-1:5000, IHC:1:20-1:200
Form	Liquid
Conjugate	Non-conjugated
Storage Buffer	Preservative: 0.03% Proclin 300 Constituents: 50% Glycerol, 0.01M PBS, PH 7.4
Purification Method	Antigen Affinity Purified
Isotype	IgG
Clonality	Polyclonal
Alias	Leucine-rich repeat-containing protein 20, LRRC20
Immunogen Species	Homo sapiens (Human)
Research Area	Others
Target Names	LRRC20

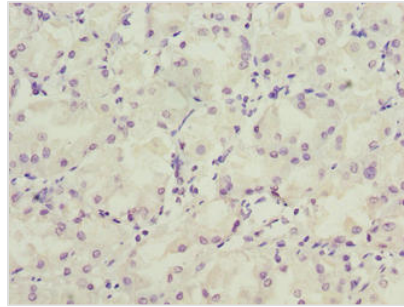
Image



Western blot
 All lanes: LRRC20 antibody at 1µg/ml
 Lane 1: Jurkat whole cell lysate
 Lane 2: Mouse spleen tissue
 Secondary
 Goat polyclonal to rabbit IgG at 1/10000 dilution
 Predicted band size: 21, 15 kDa
 Observed band size: 21 kDa



Immunohistochemistry of paraffin-embedded human testis tissue using CSB-PA823454LA01HU at dilution of 1:100



Immunohistochemistry of paraffin-embedded human gastric cancer using CSB-PA823454LA01HU at dilution of 1:100

Usage

For Research Use Only. Not for use in diagnostic or therapeutic procedures.