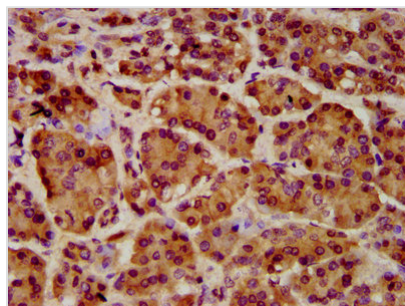




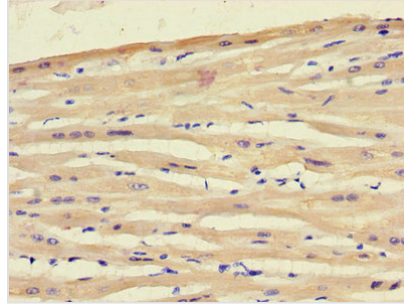
ART5 Antibody

Product Code	CSB-PA836246LA01HU
Storage	Upon receipt, store at -20°C or -80°C. Avoid repeated freeze.
Uniprot No.	Q96L15
Immunogen	Recombinant Human Ecto-ADP-ribosyltransferase 5 protein (45-291AA)
Raised In	Rabbit
Species Reactivity	Human
Tested Applications	ELISA, IHC; Recommended dilution: IHC:1:100-1:1000
Form	Liquid
Conjugate	Non-conjugated
Storage Buffer	Preservative: 0.03% Proclin 300 Constituents: 50% Glycerol, 0.01M PBS, PH 7.4
Purification Method	>95%, Protein G purified
Isotype	IgG
Clonality	Polyclonal
Alias	Ecto-ADP-ribosyltransferase 5 (EC 2.4.2.31) (ADP-ribosyltransferase C2 and C3 toxin-like 5) (ARTC5) (Mono(ADP-ribosyl)transferase 5) (NAD(P)(+)--arginine ADP-ribosyltransferase 5), ART5
Immunogen Species	Homo sapiens (Human)
Research Area	Cell Biology
Target Names	ART5

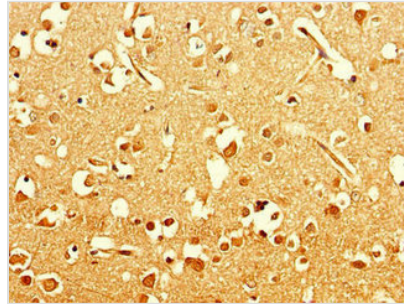
Image



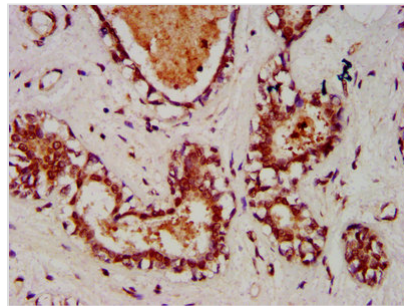
IHC image of CSB-PA836246LA01HU diluted at 1:1000 and staining in paraffin-embedded human pancreatic cancer performed on a Leica BondTM system. After dewaxing and hydration, antigen retrieval was mediated by high pressure in a citrate buffer (pH 6.0). Section was blocked with 10% normal goat serum 30min at RT. Then primary antibody (1% BSA) was incubated at 4°C overnight. The primary is detected by a biotinylated secondary antibody and visualized using an HRP conjugated SP system.



Immunohistochemistry of paraffin-embedded human heart tissue using CSB-PA836246LA01HU at dilution of 1:100



Immunohistochemistry of paraffin-embedded human brain tissue using CSB-PA836246LA01HU at dilution of 1:100



IHC image of CSB-PA836246LA01HU diluted at 1:1000 and staining in paraffin-embedded human breast cancer performed on a Leica Bond™ system. After dewaxing and hydration, antigen retrieval was mediated by high pressure in a citrate buffer (pH 6.0). Section was blocked with 10% normal goat serum 30min at RT. Then primary antibody (1% BSA) was incubated at 4°C overnight. The primary is detected by a biotinylated secondary antibody and visualized using an HRP conjugated SP system.

Usage

For Research Use Only. Not for use in diagnostic or therapeutic procedures.