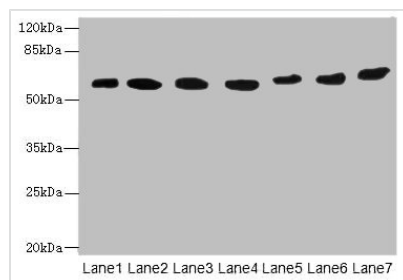




# ATL2 Antibody

<b>Product Code</b>	CSB-PA836776LA01HU
<b>Storage</b>	Upon receipt, store at -20°C or -80°C. Avoid repeated freeze.
<b>Uniprot No.</b>	Q8NHH9
<b>Immunogen</b>	Recombinant Human Atlastin-2 protein (1-300AA)
<b>Raised In</b>	Rabbit
<b>Species Reactivity</b>	Human
<b>Tested Applications</b>	ELISA, WB, IF; Recommended dilution: WB:1:500-1:2000, IF:1:50-1:200
<b>Form</b>	Liquid
<b>Conjugate</b>	Non-conjugated
<b>Storage Buffer</b>	Preservative: 0.03% Proclin 300 Constituents: 50% Glycerol, 0.01M PBS, PH 7.4
<b>Purification Method</b>	Antigen Affinity Purified
<b>Isotype</b>	IgG
<b>Clonality</b>	Polyclonal
<b>Product Type</b>	Polyclonal Antibody
<b>Immunogen Species</b>	Homo sapiens (Human)
<b>Research Area</b>	Signal Transduction
<b>Target Names</b>	ATL2

## Image



### Western blot

All lanes: ATL2 antibody at 1µg/ml

Lane 1: HepG2 whole cell lysate

Lane 2: MCF-7 whole cell lysate

Lane 3: HL60 whole cell lysate

Lane 4: K562 whole cell lysate

Lane 5: U251 whole cell lysate

Lane 6: A549 whole cell lysate

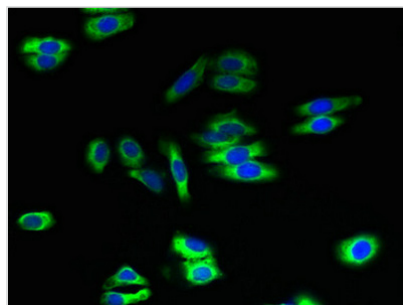
Lane 7: A431 whole cell lysate

Secondary

Goat polyclonal to rabbit IgG at 1/10000 dilution

Predicted band size: 67, 47, 66, 65 kDa

Observed band size: 67 kDa



Immunofluorescent analysis of HepG2 cells using CSB-PA836776LA01HU at dilution of 1:100 and Alexa Fluor 488-conjugated AffiniPure Goat Anti-Rabbit IgG(H+L)