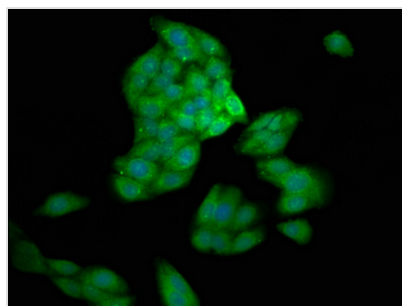




CASP10 Antibody

Product Code	CSB-PA838815LA01HU
Storage	Upon receipt, store at -20°C or -80°C. Avoid repeated freeze.
Uniprot No.	Q92851
Immunogen	Recombinant Human Caspase-10 protein (220-415AA)
Raised In	Rabbit
Species Reactivity	Human
Tested Applications	ELISA, IF; Recommended dilution: IF:1:200-1:500
Form	Liquid
Conjugate	Non-conjugated
Storage Buffer	Preservative: 0.03% Proclin 300 Constituents: 50% Glycerol, 0.01M PBS, PH 7.4
Purification Method	>95%, Protein G purified
Isotype	IgG
Clonality	Polyclonal
Alias	Caspase-10 (CASP-10) (EC 3.4.22.63) (Apoptotic protease Mch-4) (FAS-associated death domain protein interleukin-1B-converting enzyme 2) (FLICE2) (ICE-like apoptotic protease 4) [Cleaved into: Caspase-10 subunit p23/17; Caspase-10 subunit p12], CASP10, MCH4
Immunogen Species	Homo sapiens (Human)
Research Area	Cell Biology

Image



Immunofluorescence staining of HepG2 cells with CSB-PA838815LA01HU at 1:200, counter-stained with DAPI. The cells were fixed in 4% formaldehyde, permeabilized using 0.2% Triton X-100 and blocked in 10% normal Goat Serum. The cells were then incubated with the antibody overnight at 4°C. The secondary antibody was Alexa Fluor 488-conjugated AffiniPure Goat Anti-Rabbit IgG(H+L).

Usage

For Research Use Only. Not for use in diagnostic or therapeutic procedures.