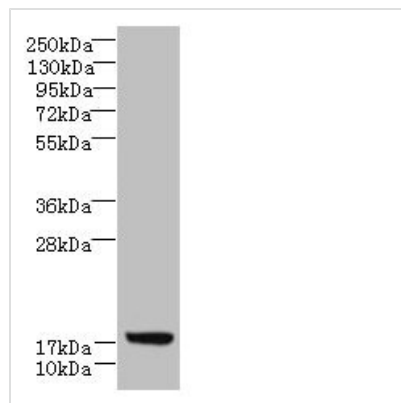




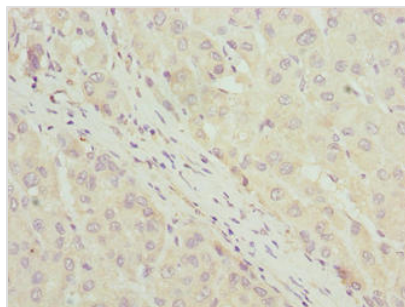
# LLCFC1 Antibody

<b>Product Code</b>	CSB-PA839358LA01HU
<b>Storage</b>	Upon receipt, store at -20°C or -80°C. Avoid repeated freeze.
<b>Uniprot No.</b>	Q96L11
<b>Immunogen</b>	Recombinant Human LLLL and CFNLAS motif-containing protein 1 protein (29-122AA)
<b>Raised In</b>	Rabbit
<b>Species Reactivity</b>	Human
<b>Tested Applications</b>	ELISA, WB, IHC; Recommended dilution: WB:1:1000-1:5000, IHC:1:20-1:200
<b>Form</b>	Liquid
<b>Conjugate</b>	Non-conjugated
<b>Storage Buffer</b>	Preservative: 0.03% Proclin 300 Constituents: 50% Glycerol, 0.01M PBS, PH 7.4
<b>Purification Method</b>	>95%, Protein G purified
<b>Isotype</b>	IgG
<b>Clonality</b>	Polyclonal
<b>Alias</b>	LLLL and CFNLAS motif-containing protein 1 (MSSP-binding protein CTM-1), LLCFC1, C7orf34
<b>Immunogen Species</b>	Homo sapiens (Human)
<b>Research Area</b>	Others
<b>Target Names</b>	LLCFC1

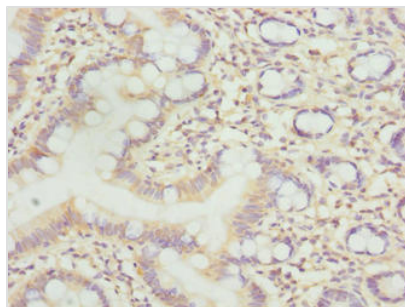
## Image



Western blot  
 All lanes: LLCFC1 antibody at 3.5µg/ml + K562 whole cell lysate  
 Secondary  
 Goat polyclonal to rabbit IgG at 1/10000 dilution  
 Predicted band size: 14, 5, 17 kDa  
 Observed band size: 17 kDa



Immunohistochemistry of paraffin-embedded human liver cancer using CSB-PA839358LA01HU at dilution of 1:100



Immunohistochemistry of paraffin-embedded human small intestine tissue using CSB-PA839358LA01HU at dilution of 1:100

## Usage

For Research Use Only. Not for use in diagnostic or therapeutic procedures.