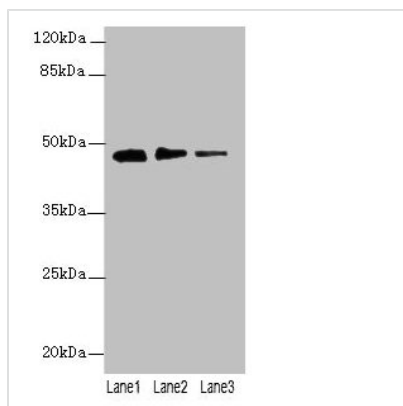




PRSS35 Antibody

Product Code	CSB-PA839792LA01HU
Storage	Upon receipt, store at -20°C or -80°C. Avoid repeated freeze.
Uniprot No.	Q8N3Z0
Immunogen	Recombinant Human Inactive serine protease 35 protein (201-413AA)
Raised In	Rabbit
Species Reactivity	Human, Mouse
Tested Applications	ELISA, WB, IHC; Recommended dilution: WB:1:1000-1:5000, IHC:1:20-1:200
Form	Liquid
Conjugate	Non-conjugated
Storage Buffer	Preservative: 0.03% Proclin 300 Constituents: 50% Glycerol, 0.01M PBS, PH 7.4
Purification Method	Antigen Affinity Purified
Isotype	IgG
Clonality	Polyclonal
Alias	Inactive serine protease 35, PRSS35, C6orf158
Immunogen Species	Homo sapiens (Human)
Research Area	Cell Biology
Target Names	PRSS35

Image



Western blot

All lanes: PRSS35 antibody at 0.2µg/ml

Lane 1: PC-3 whole cell lysate

Lane 2: NIH/3T3 whole cell lysate

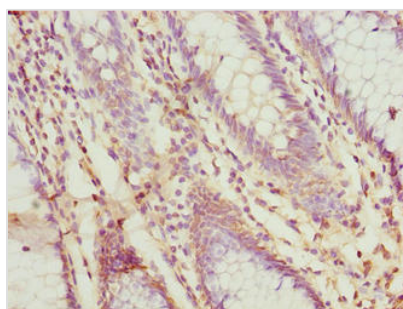
Lane 3: Mouse stomach tissue

Secondary

Goat polyclonal to rabbit IgG at 1/10000 dilution

Predicted band size: 48 kDa

Observed band size: 48 kDa



Immunohistochemistry of paraffin-embedded

human colon cancer using CSB-

PA839792LA01HU at dilution of 1:100



Usage

For Research Use Only. Not for use in diagnostic or therapeutic procedures.