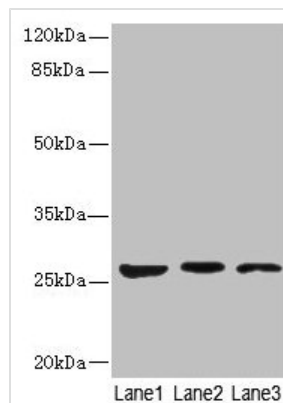




KLK6 Antibody

Product Code	CSB-PA842165LA01HU
Storage	Upon receipt, store at -20°C or -80°C. Avoid repeated freeze.
Uniprot No.	Q92876
Immunogen	Recombinant Human Kallikrein-6 protein (22-244AA)
Raised In	Rabbit
Species Reactivity	Human, Mouse
Tested Applications	ELISA, WB, IHC, IF; Recommended dilution: WB:1:1000-1:5000, IHC:1:20-1:200, IF:1:50-1:200
Form	Liquid
Conjugate	Non-conjugated
Storage Buffer	Preservative: 0.03% Proclin 300 Constituents: 50% Glycerol, 0.01M PBS, PH 7.4
Purification Method	>95%, Protein G purified
Isotype	IgG
Clonality	Polyclonal
Alias	Kallikrein-6 (EC 3.4.21.-) (Neurosin) (Protease M) (SP59) (Serine protease 18) (Serine protease 9) (Zyme), KLK6, PRSS18 PRSS9
Immunogen Species	Homo sapiens (Human)
Research Area	Neuroscience
Target Names	KLK6

Image



Western blot

All lanes: KLK6 antibody at 5µg/ml

Lane 1: Mouse liver tissue

Lane 2: Mouse brain tissue

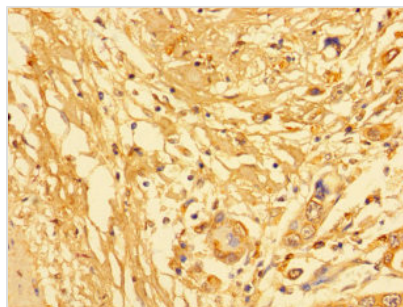
Lane 3: A375 whole cell lysate

Secondary

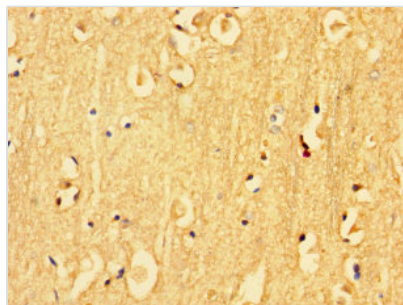
Goat polyclonal to rabbit IgG at 1/10000 dilution

Predicted band size: 27, 16, 5 kDa

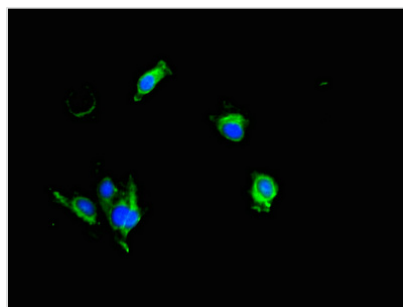
Observed band size: 27 kDa



Immunohistochemistry of paraffin-embedded human pancreatic cancer using CSB-PA842165LA01HU at dilution of 1:100



Immunohistochemistry of paraffin-embedded human brain tissue using CSB-PA842165LA01HU at dilution of 1:100



Immunofluorescent analysis of HeLa cells using CSB-PA842165LA01HU at dilution of 1:100 and Alexa Fluor 488-conjugated AffiniPure Goat Anti-Rabbit IgG(H+L)