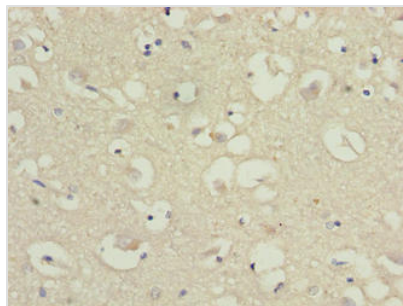




CMTM5 Antibody

Product Code	CSB-PA842660LA01HU
Storage	Upon receipt, store at -20°C or -80°C. Avoid repeated freeze.
Uniprot No.	Q96DZ9
Immunogen	Recombinant Human CKLF-like MARVEL transmembrane domain-containing protein 5 protein (1-35AA)
Raised In	Rabbit
Species Reactivity	Human
Tested Applications	ELISA, IHC; Recommended dilution: IHC:1:20-1:200
Form	Liquid
Conjugate	Non-conjugated
Storage Buffer	Preservative: 0.03% Proclin 300 Constituents: 50% Glycerol, 0.01M PBS, PH 7.4
Purification Method	>95%, Protein G purified
Isotype	IgG
Clonality	Polyclonal
Alias	CKLF-like MARVEL transmembrane domain-containing protein 5 (Chemokine-like factor superfamily member 5), CMTM5, CKLFSF5
Immunogen Species	Homo sapiens (Human)
Research Area	Immunology
Target Names	CMTM5

Image



Immunohistochemistry of paraffin-embedded human brain tissue using CSB-PA842660LA01HU at dilution of 1:100

Usage

For Research Use Only. Not for use in diagnostic or therapeutic procedures.